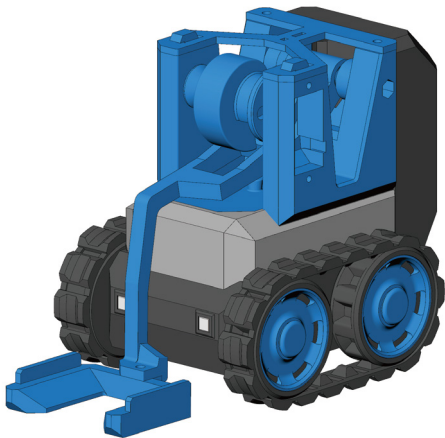


Assembly Guide

Soccer Bot



MakerWorld

Charging Safety Instructions:

- 1.The lithium battery in this product must be charged only with the included USB charger. It is recommended to connect the USB charger directly to a computer USB port. If using an external adapter, choose a standard USB charger with 5V 1-2A output. Do not use any charging device not officially recommended.
- 2.Never use mobile fast chargers or high-voltage/current adapters (such as 9V/12V), as this may result in device damage, overheating, or safety accidents.
- 3.When charging, ensure the device is placed in a well-ventilated, dry area away from flammable materials, and do not cover the device.
- 4.Do not charge in environments with high temperature, humidity, or direct sunlight.
- 5.Do not charge the device unattended.
- 6.If you notice abnormal conditions (such as overheating, deformation, odor, or smoke), stop charging immediately and contact customer service.
- 7.Do not disassemble or modify the product or charger yourself.

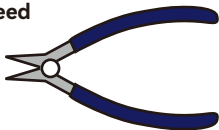
Disclaimer:

The company assumes no responsibility for any device damage, malfunction, fire, personal injury, or other losses caused by the use of non-original or non-officially recommended chargers/cables, chargers with output above 5V or 2A, or charging in improper environments, in violation of this manual. Users must strictly follow the product's safety instructions to ensure personal and property safety.

Additional Tools You'll need



Instant Glue



Diagonal Cutters



Tweezers



PH1 Philips Driver



H1.5 Hex Driver

- Please ensure safe use of sharp tools and instant glue; safety first in everything you do!
- The model contains many small parts. Please prepare a container to store them and prevent loss.
- For parts to be glued together, first assemble them loosely to check the fitting before applying glue.
- Depending on your assembly skills, the assembly time can vary from 1 to 3 hours. If you encounter any troubles, do not feel discouraged. Please leave a message on the model page or seek help in the community.
- Let's build it!

Reduction Gearbox Assembly



Find the accessories by referring to the name on the label.



1x



1x



1x



1x



1x



2x

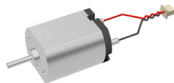


2x



1x

1:48 Single-axis Plastic Reduction Gear Kit (1PCS) - LA016



030 Micro DC Motor
with SH1.0 1x



1x

Accessories

1:48 Single-axis Plastic Reduction Gear Kit (1PCS) - LA016

1:48单轴减速齿轮包 LA016

Manufacturer: Shenzhen Tuozhu Technology Co., Ltd.

生产商: 深圳拓竹科技有限公司



6

937285

502223



2x



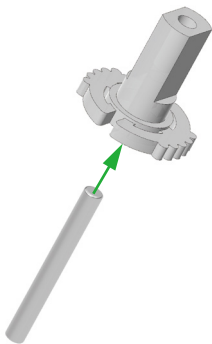
2x

Printed Parts

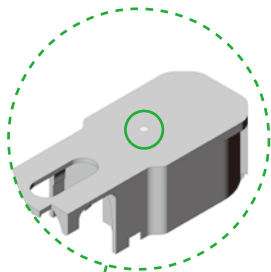
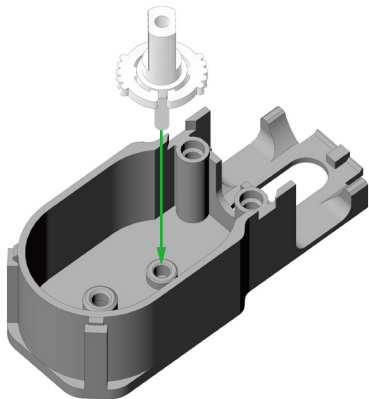
1



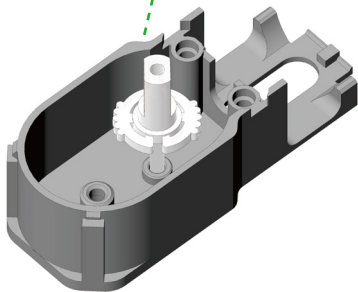
During **Steps 1-5**
This accessory serves as an assembly aid.
It will be used again in **Step 7**.



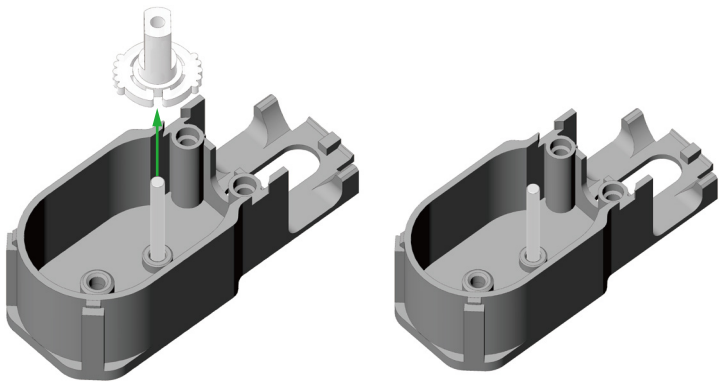
2



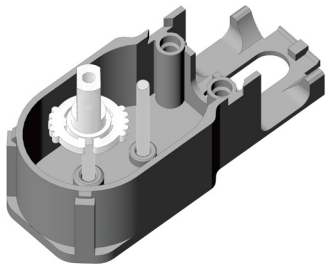
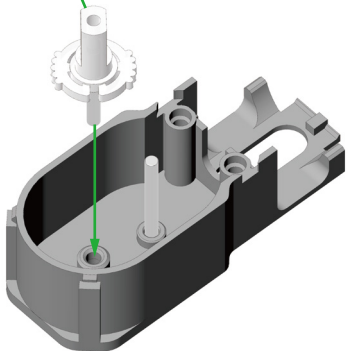
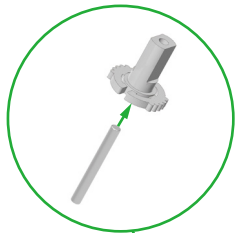
Check from the rear of the printed parts if the pin is fully seated.



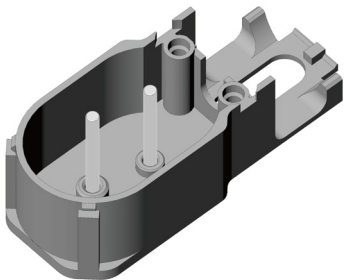
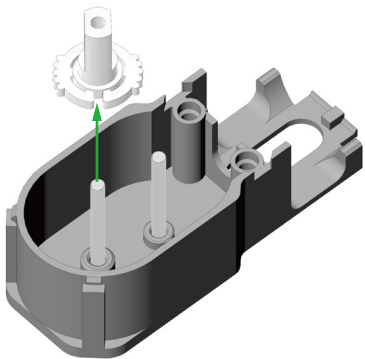
3



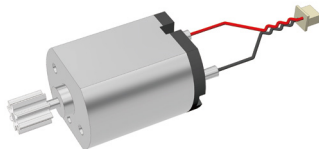
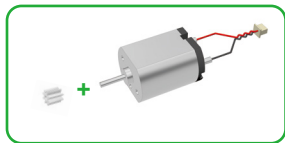
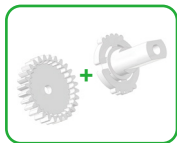
4



5

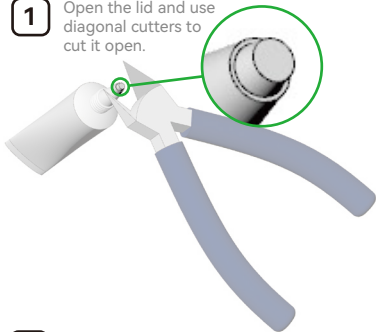


6

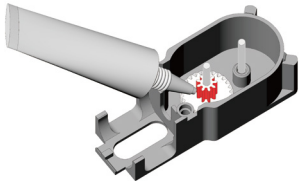


7 Assemble the gears: Use lubricant.

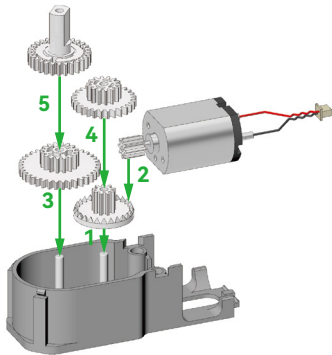
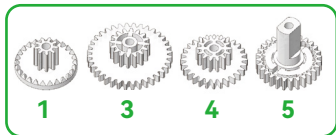
- 1** Open the lid and use diagonal cutters to cut it open.



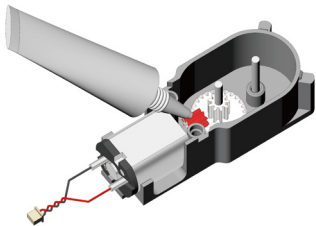
- 2** After assembling each gear, apply a small amount of lubricant to the highlighted position of the gear.



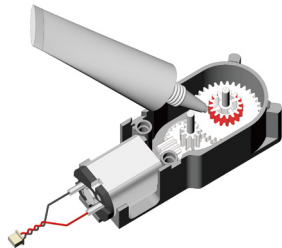
Assemble the gears: Assembly sequence



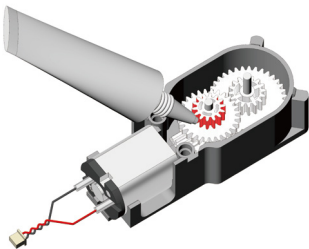
3



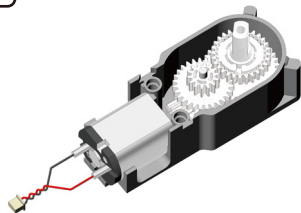
4



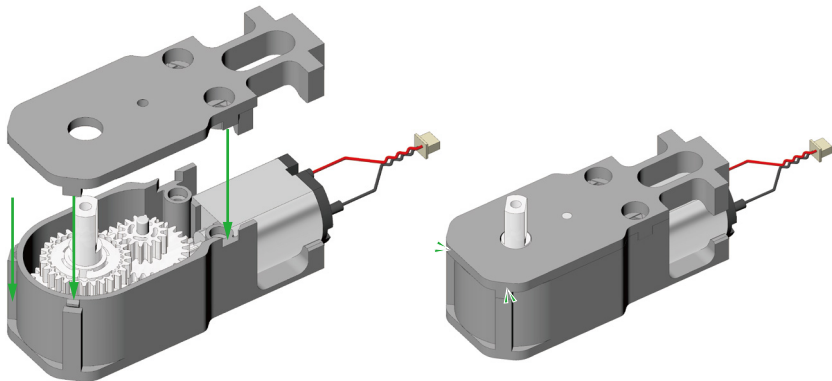
5



6

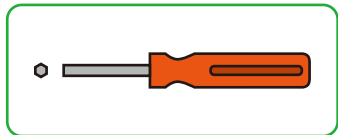


8

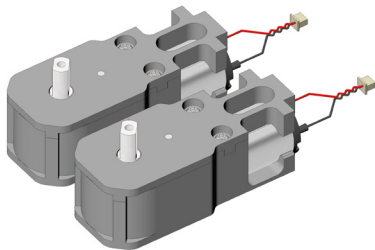
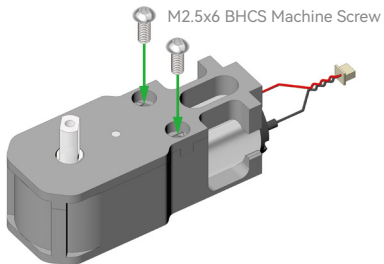


You will hear a 'click' when
the parts are in place

9

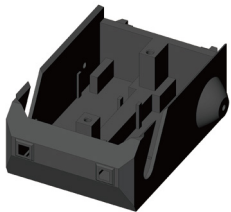


Please use H1.5 Hex Driver

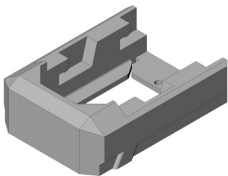


Repeat **Steps 1-9** to obtain **2** gearboxes

Vehicle Body Assembly



1x

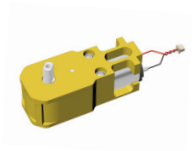


1x



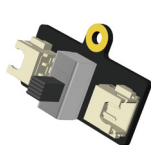
1x

Printed Parts



2x

Completed assembled gearbox



1x



1x



4x



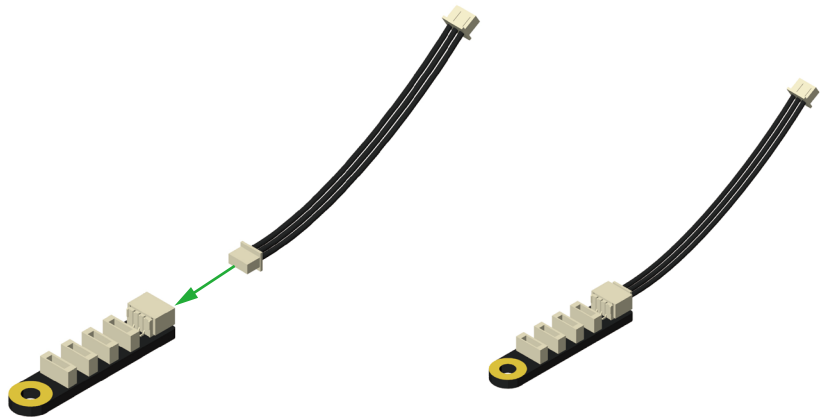
1x



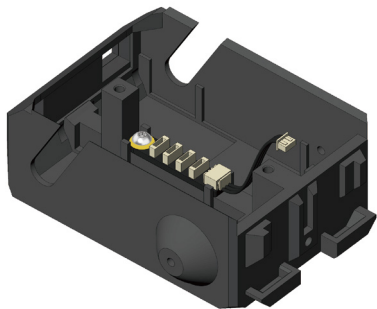
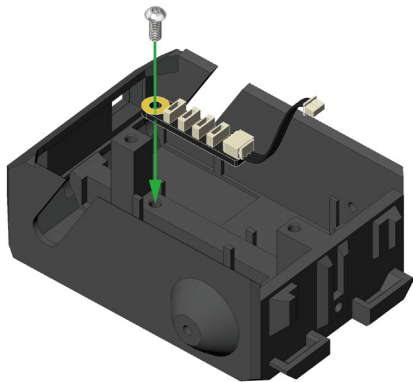
LED with IDC0.8 4PIN 2X

Accessories

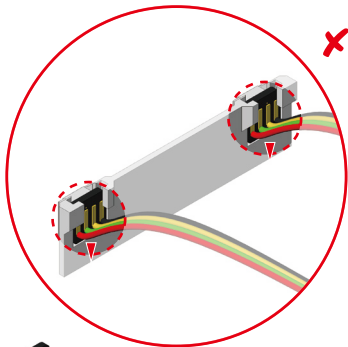
10



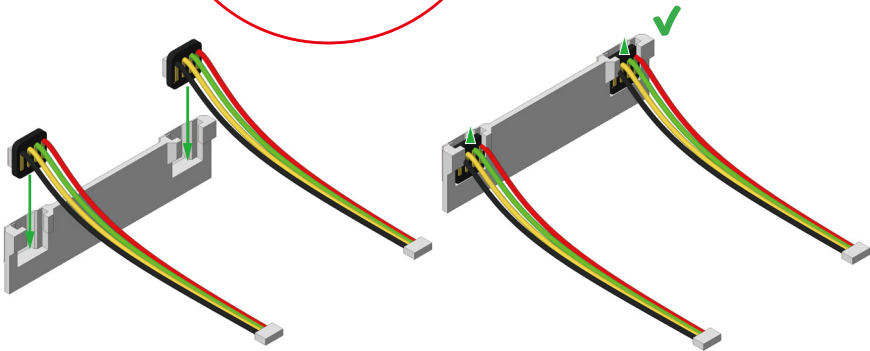
11



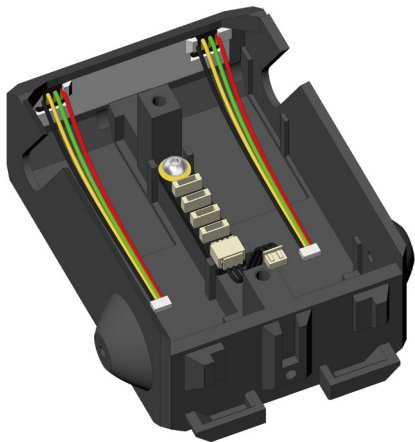
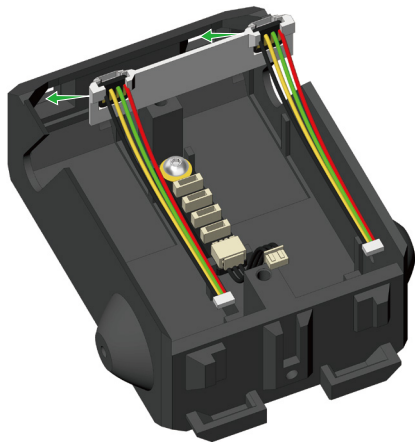
12



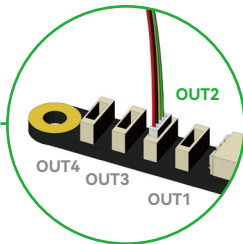
Be careful not to install the LED light panel with the soldered wire end facing **down**.



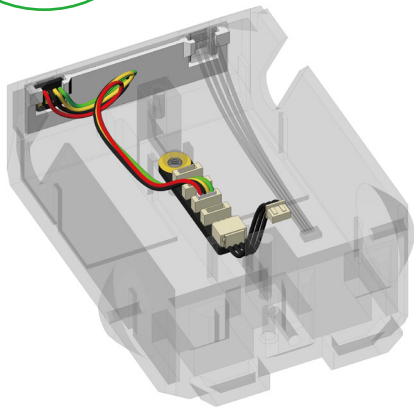
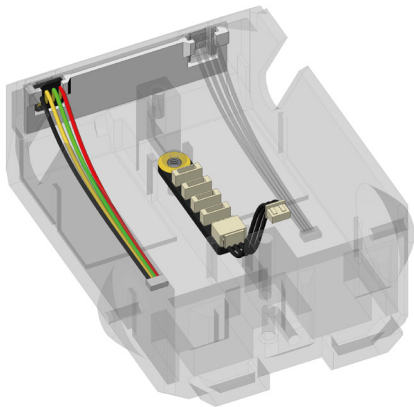
13



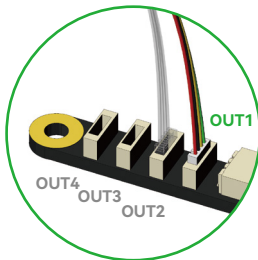
14



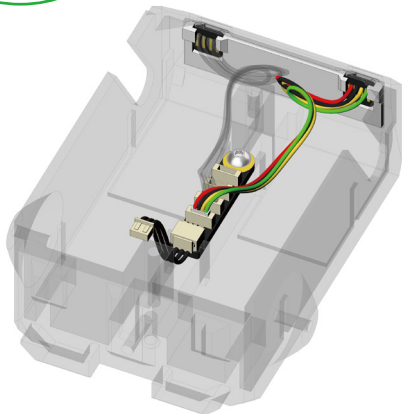
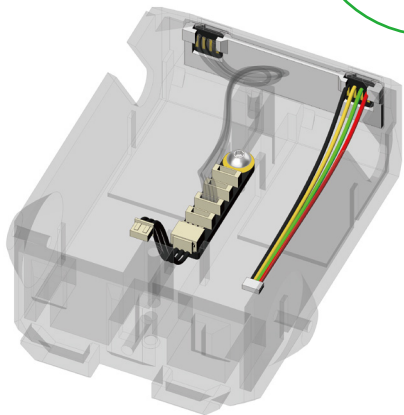
Use **tweezers** to insert the LED terminal into the **OUT2** slot and make sure the direction of the terminal matches the left diagram.



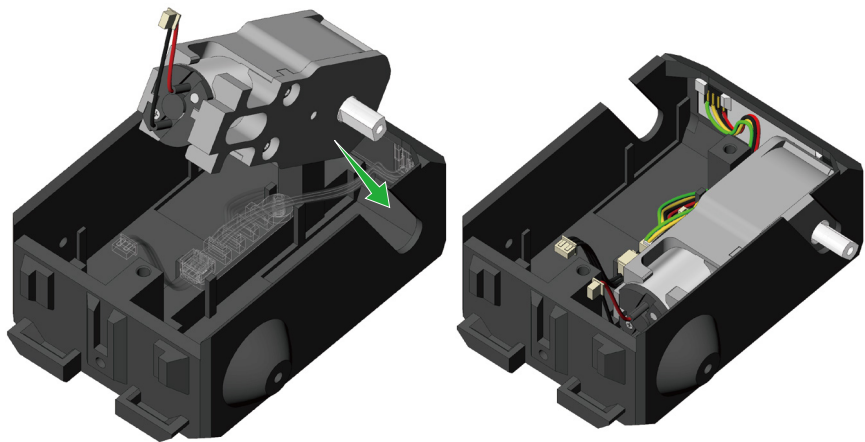
15



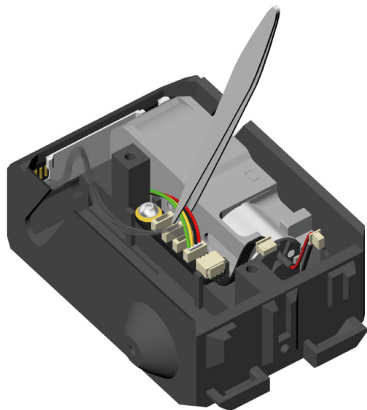
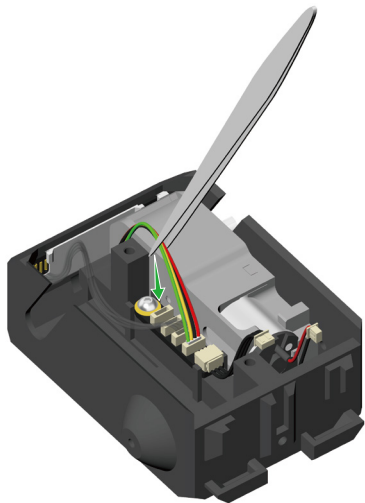
Use **tweezers** to insert the LED terminal into the **OUT1** slot and make sure the direction of the terminal matches the left diagram.



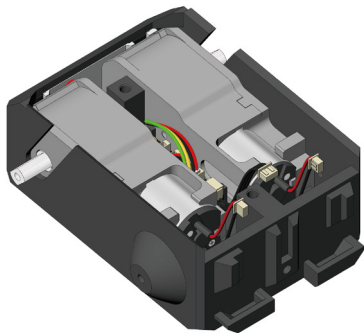
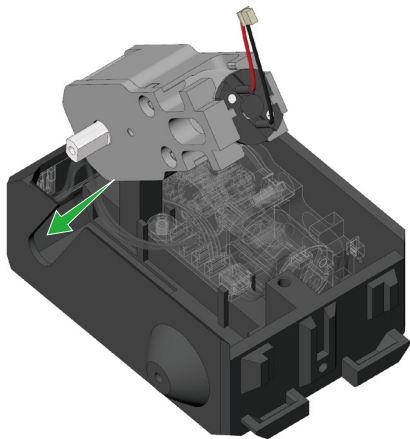
16



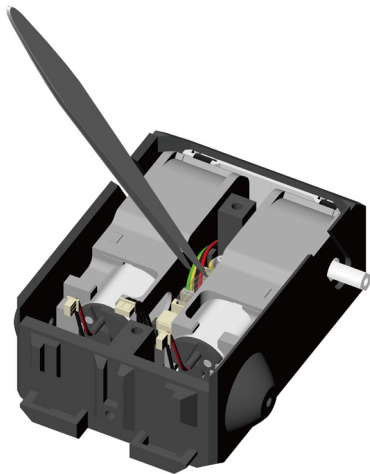
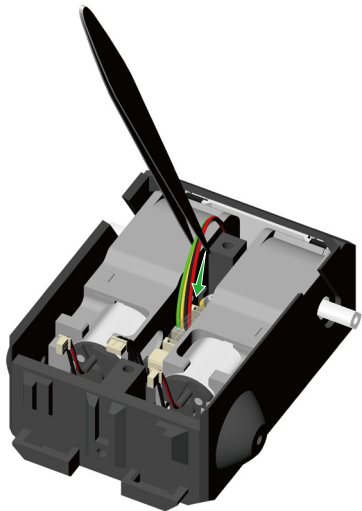
17



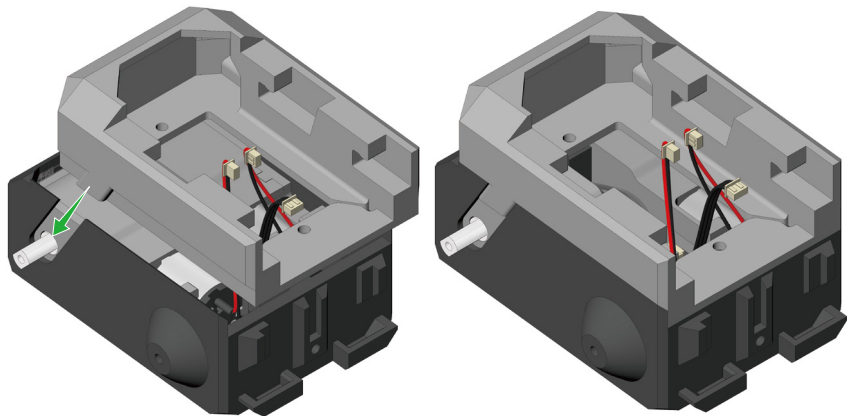
18

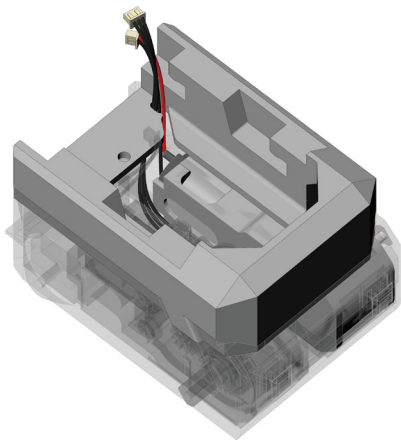
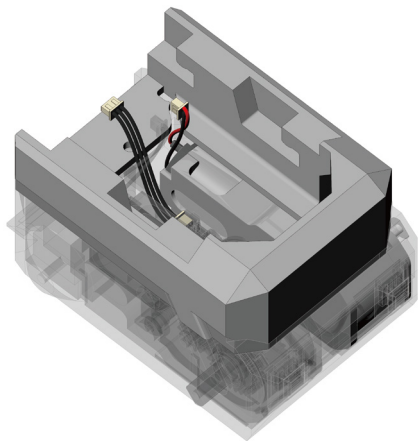


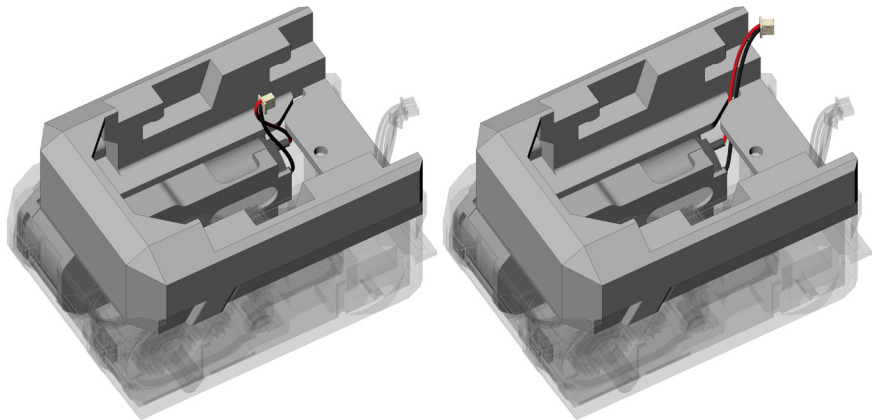
19



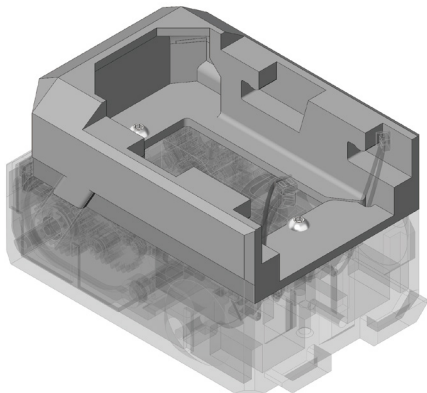
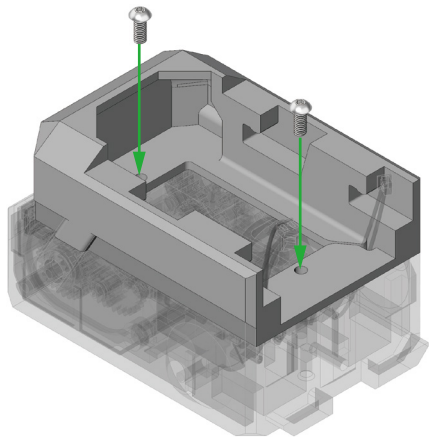
20

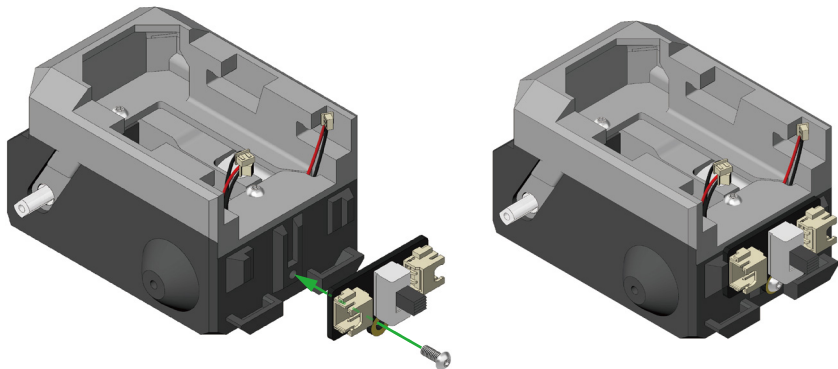




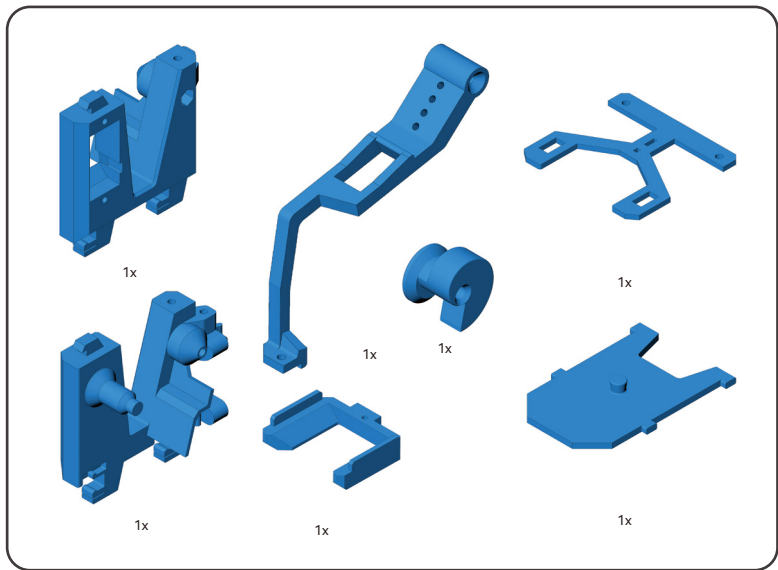


23





Locomotive Head Assembly



Printed Parts



1x



2x



1x



1x



5x



0.5x5x20 mm Helical
Compression Spring

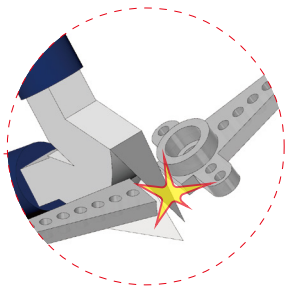
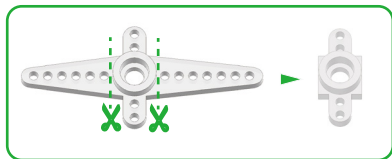


0.6x8x20 mm Helical
Compression Spring

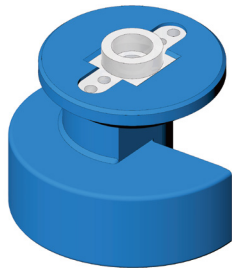
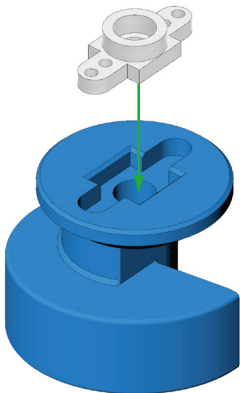


Continuous Servo 360° - PG002

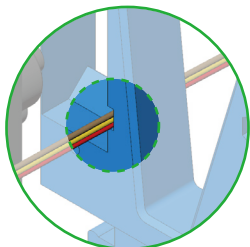
Accessories



The parts should not be facing yourself or others when cutting to avoid accidental injury.

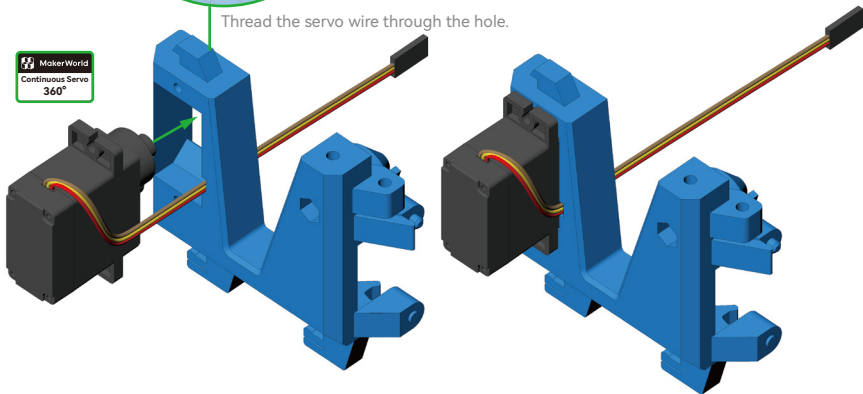


Ensure that the trimmed rudder arm can fit in and will not rotate in the slot.



Thread the servo wire through the hole.

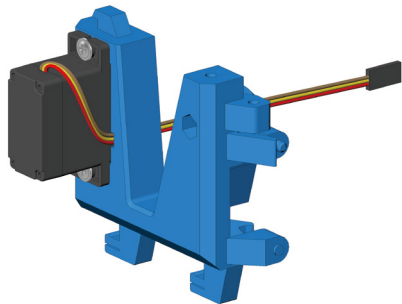
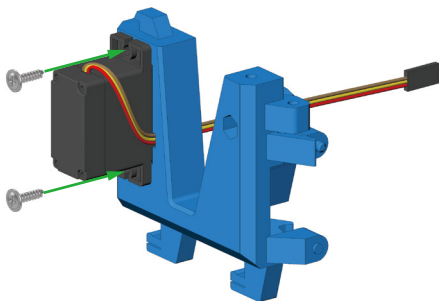
 MakerWorld
Continuous Servo
360°

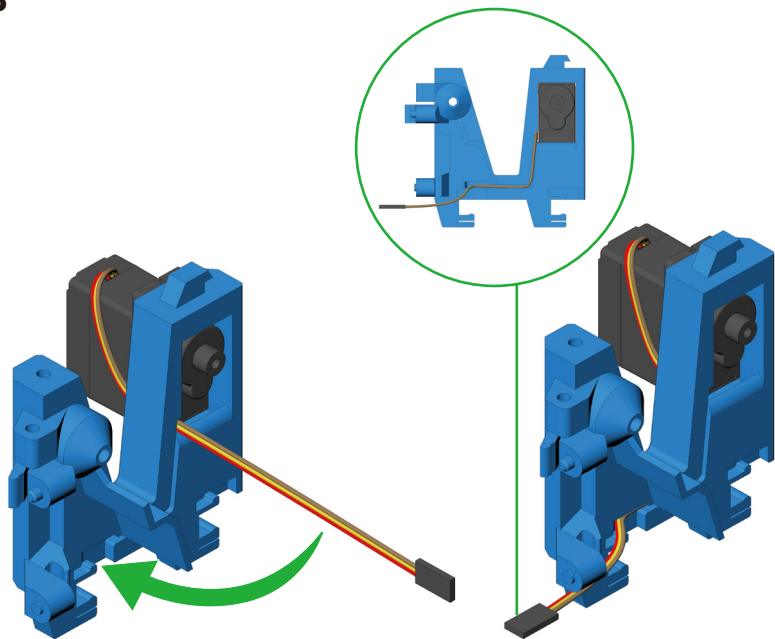


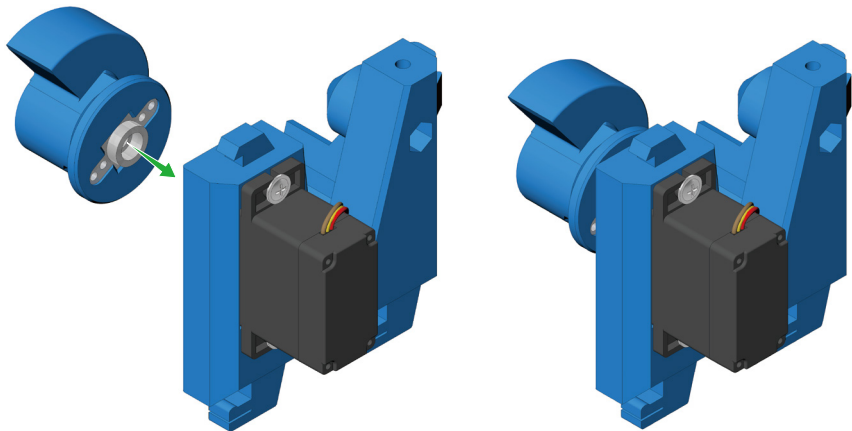
27

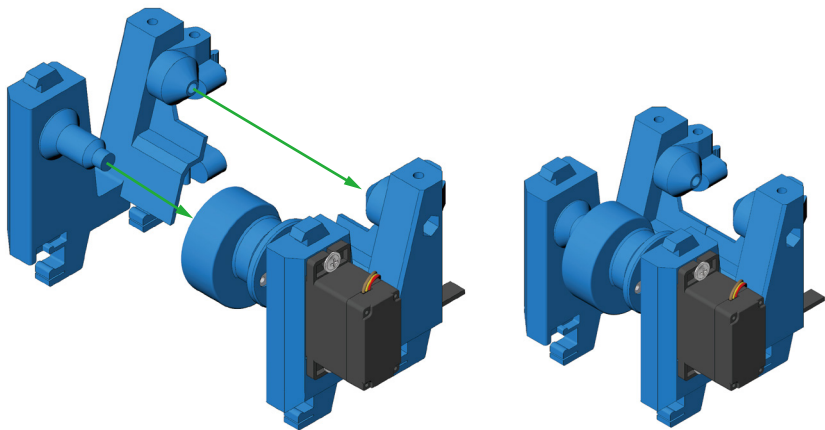


Please use PH1 Philips Driver

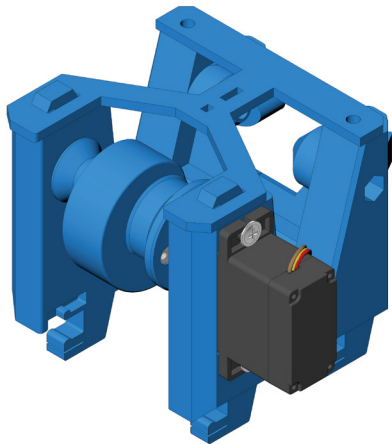
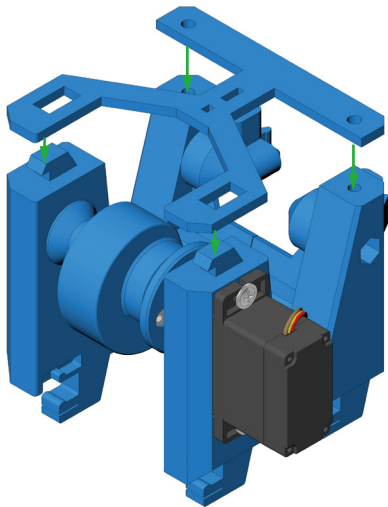


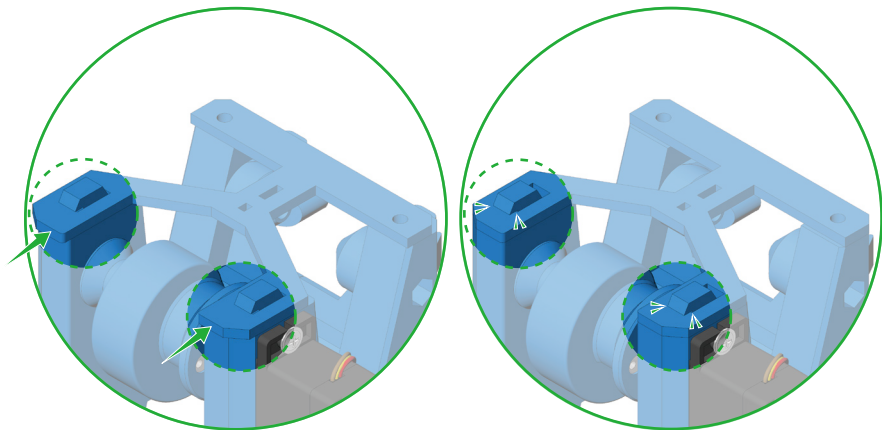






31



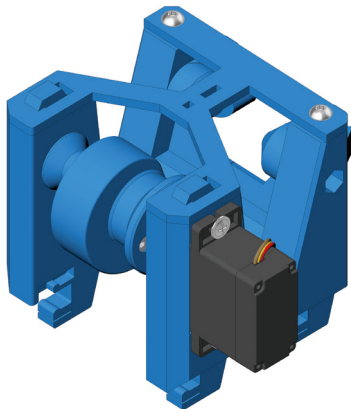
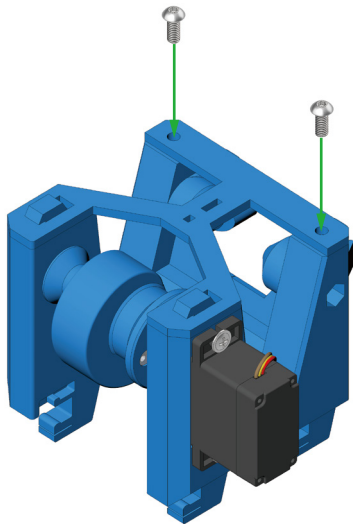


You will hear a 'click' when
the parts are in place

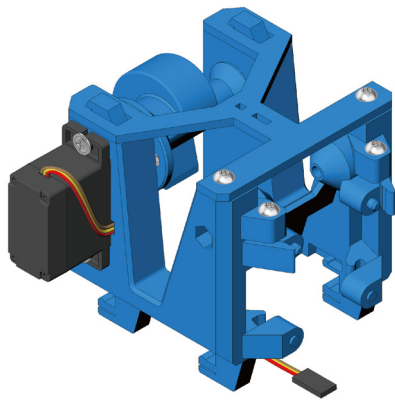
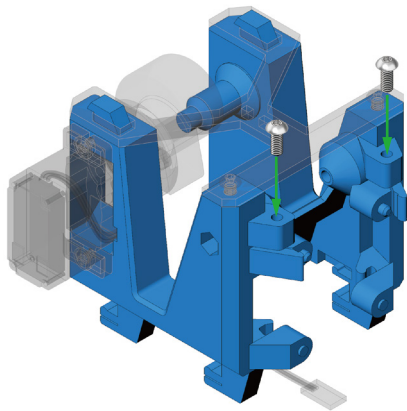
33



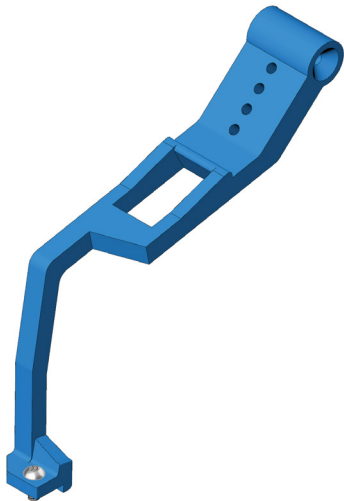
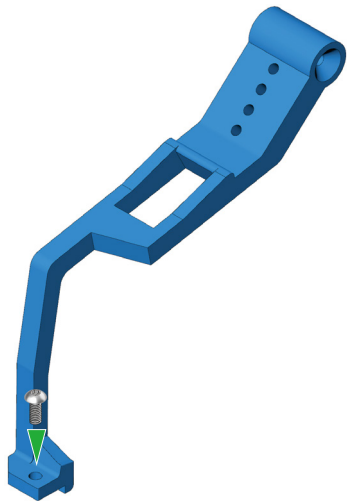
Please use H1.5 Hex Driver



34



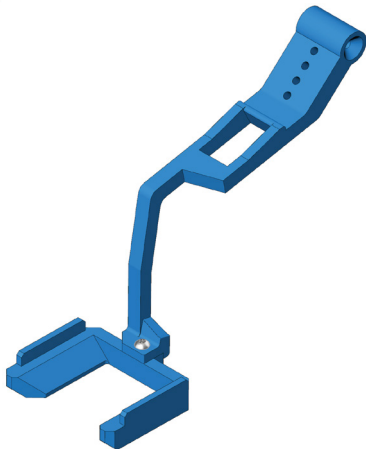
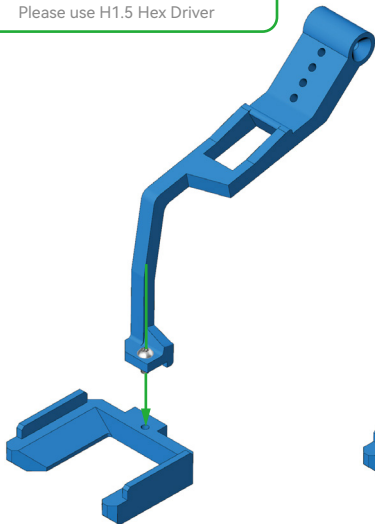
35

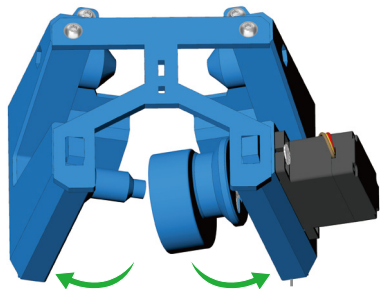
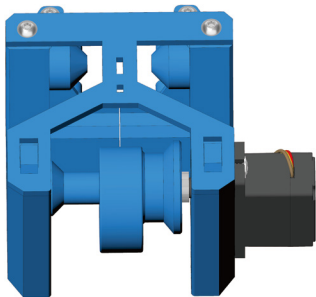


36

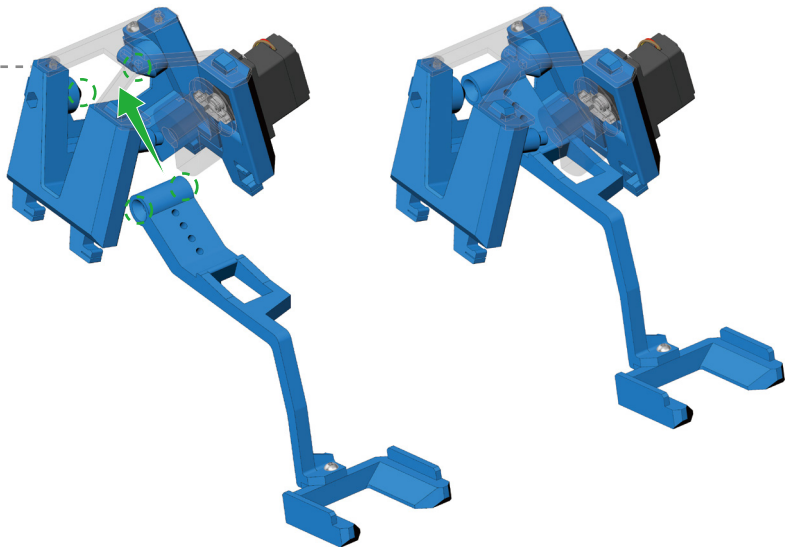


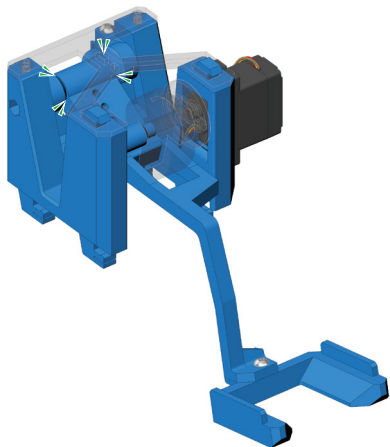
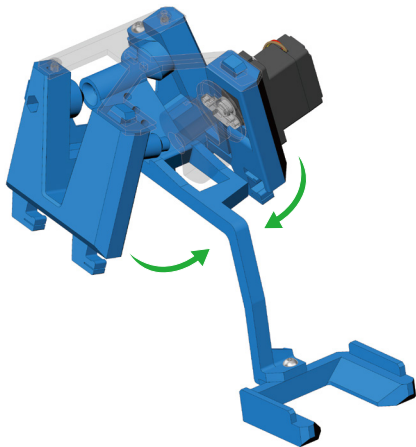
Please use H1.5 Hex Driver

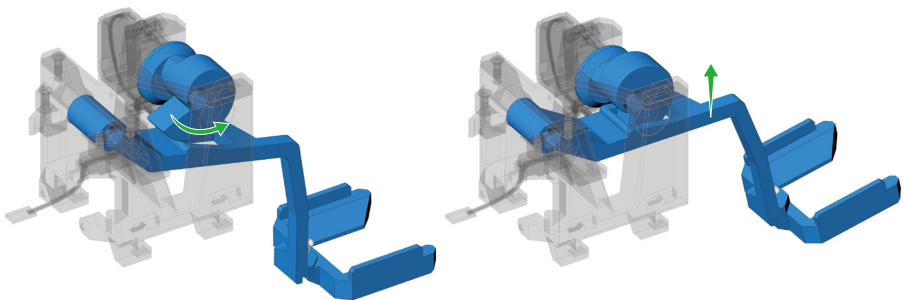




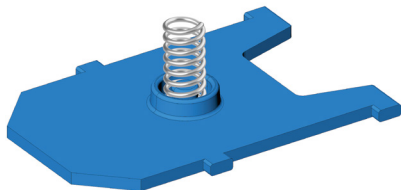
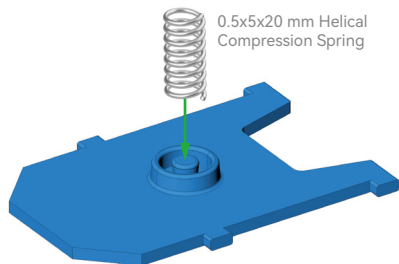
Maintain this state until the next step.



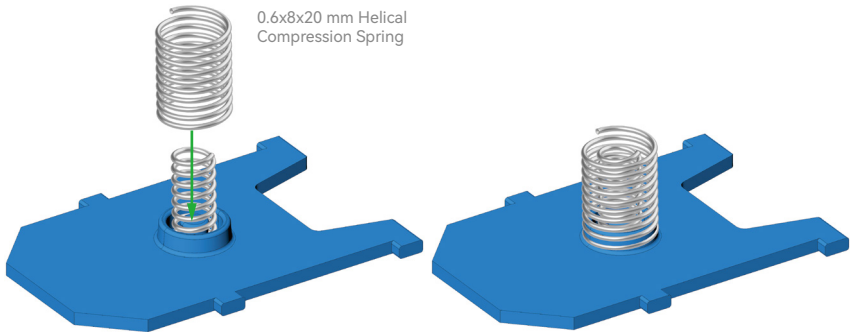




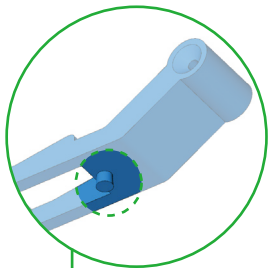
Rotate the helm wheel and adjust the fork to the relaxed position.



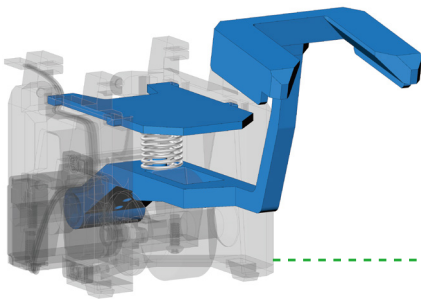
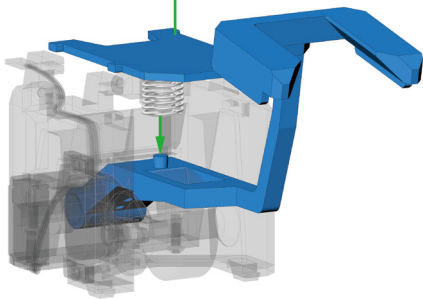
0.6x8x20 mm Helical
Compression Spring



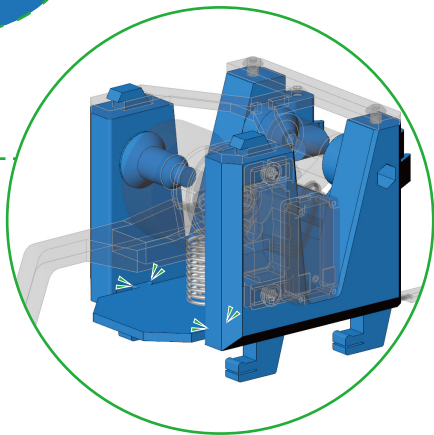
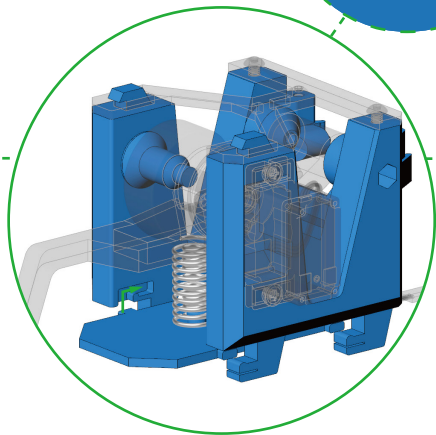
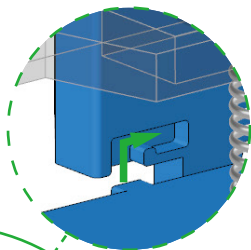
43



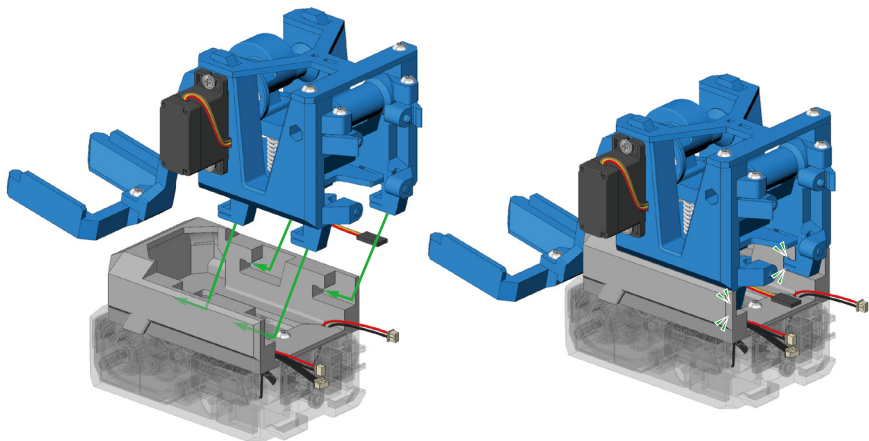
Assemble the spring at the highlighted position.



The breakdown of assembly actions is provided on the following page.

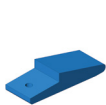


You will hear a 'click' when
the parts are in place



You will hear a 'click' when
the parts are in place

Wiring and installing other components



1x



4x



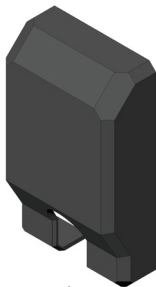
2x



2x

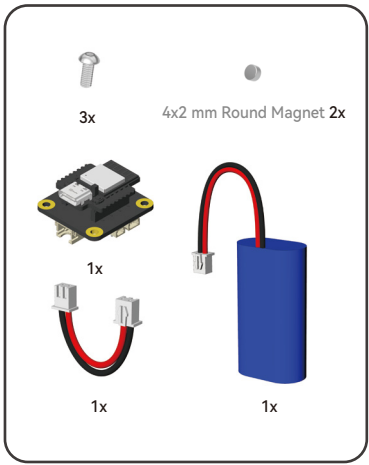


2x

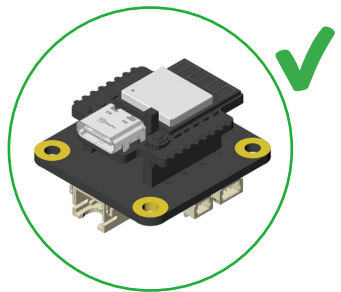


1x

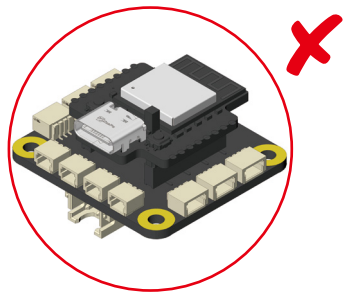
Printed Parts



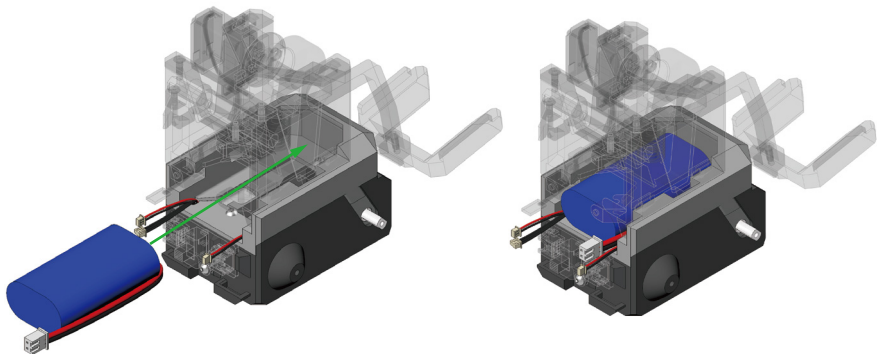
Accessories

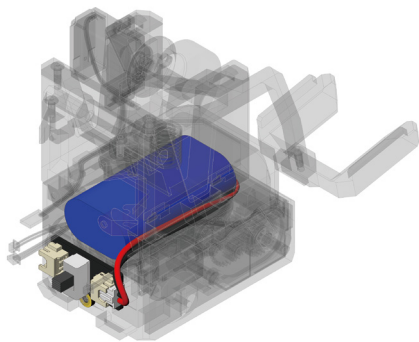
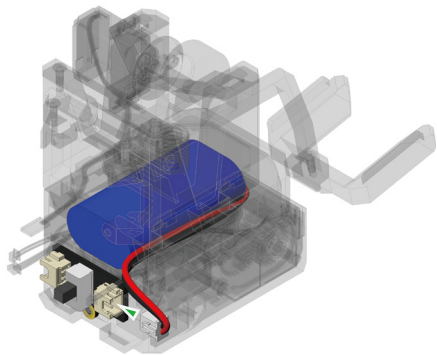


Remote Control Receiver Assembly

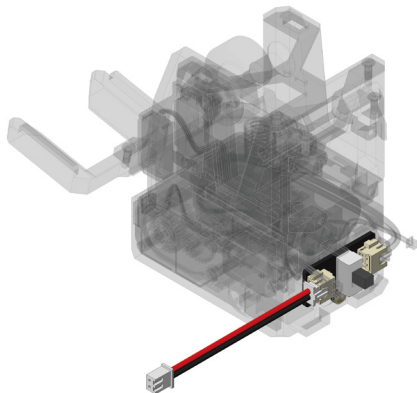
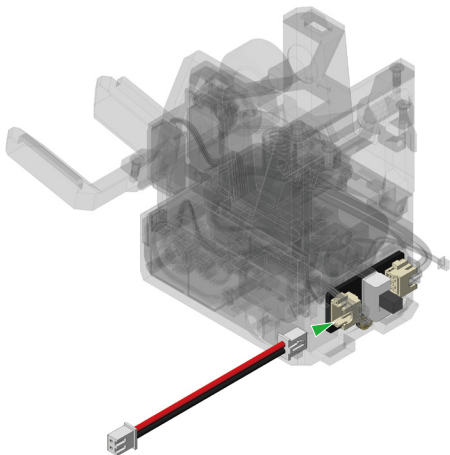


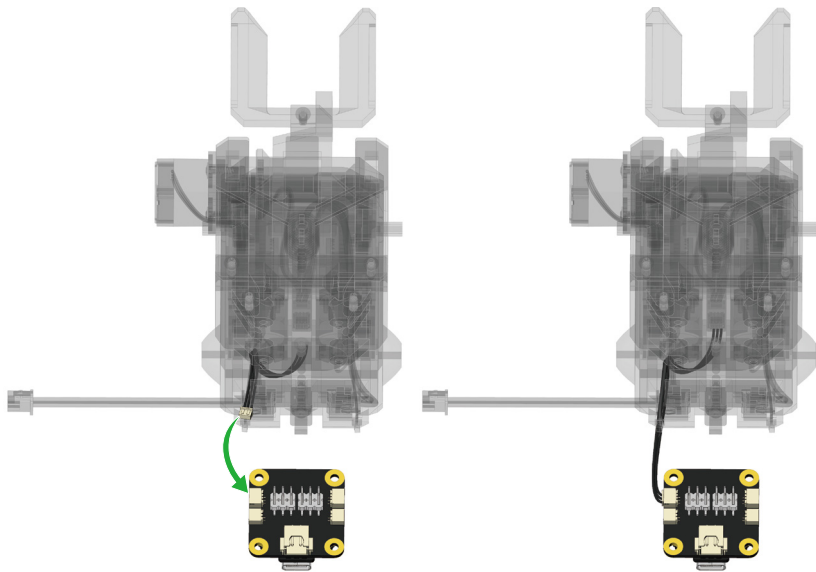
Remote Control Transmitter Assembly



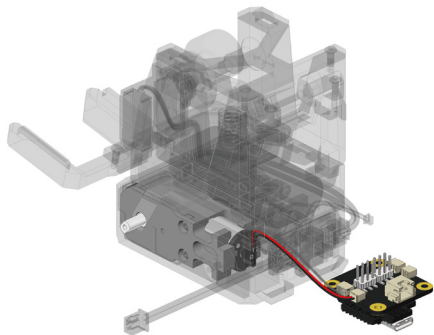
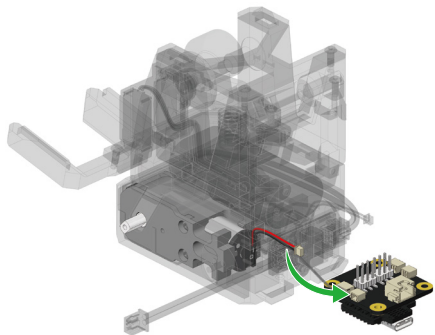


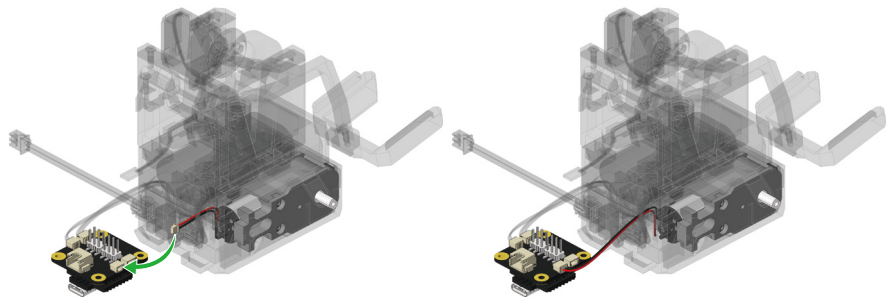
48

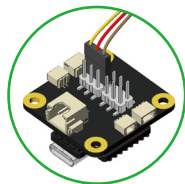




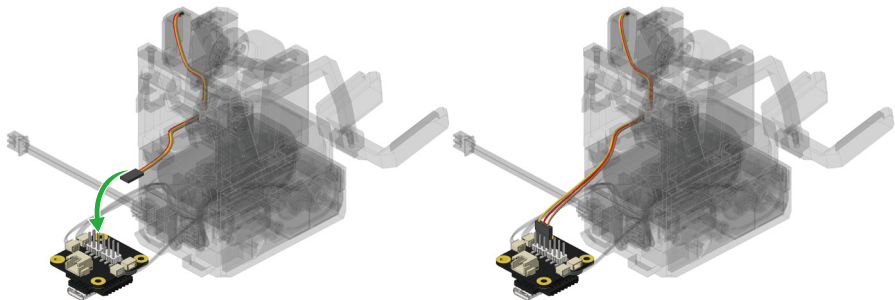
50

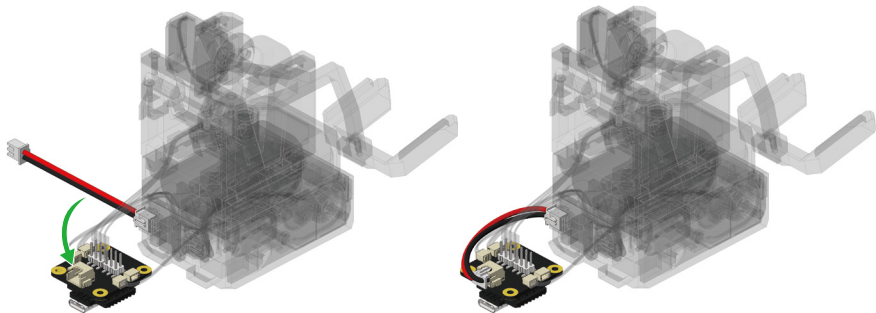


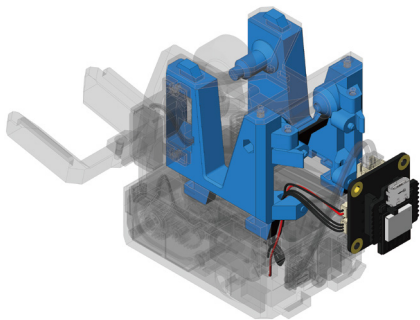
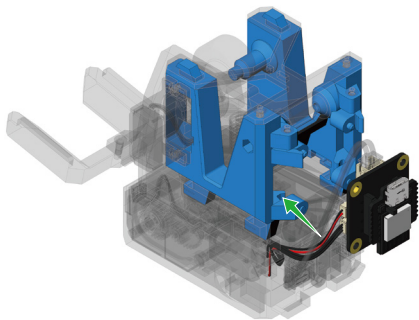




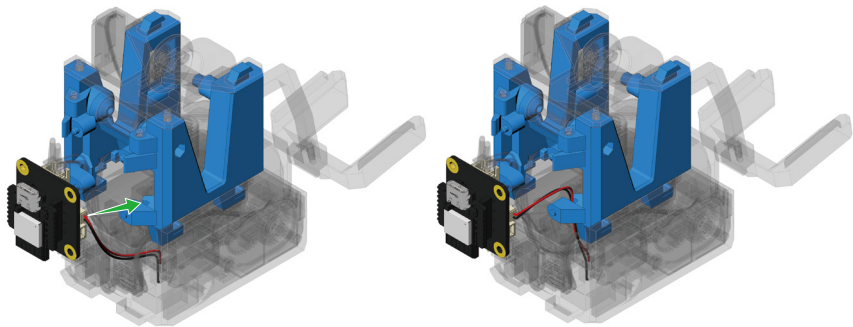
Connect the servo cable to the pin header S1 at the top left corner, and make sure the **yellow**, **red**, and **brown** wires are aligned with the correct pin positions.

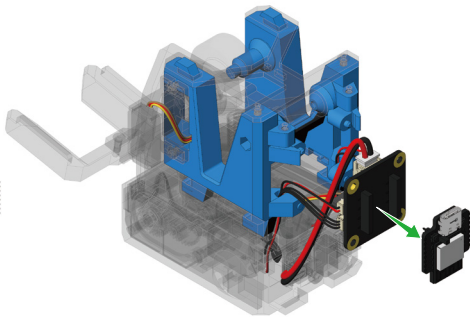
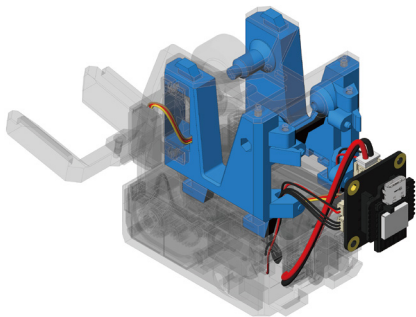


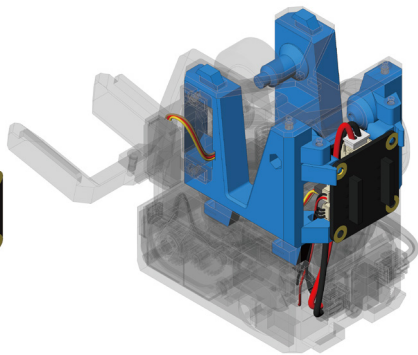
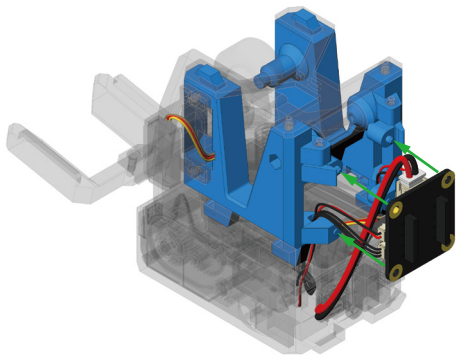


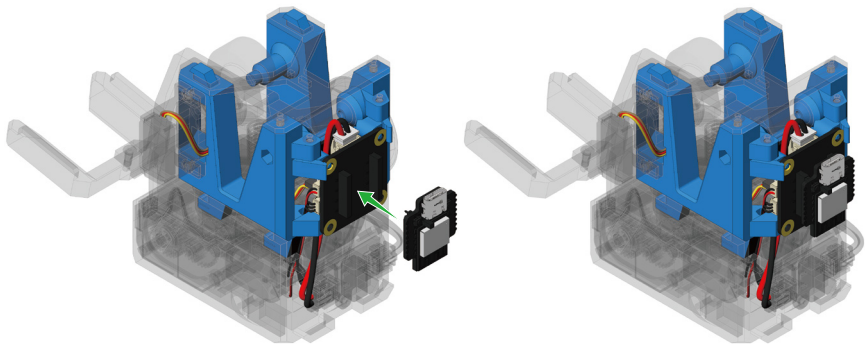


55

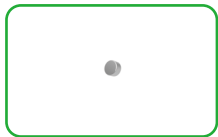




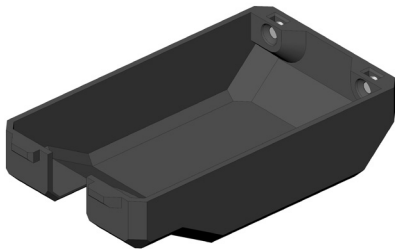
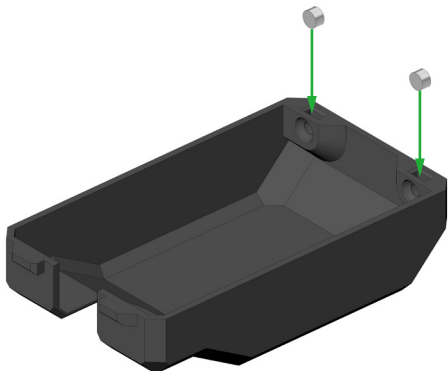




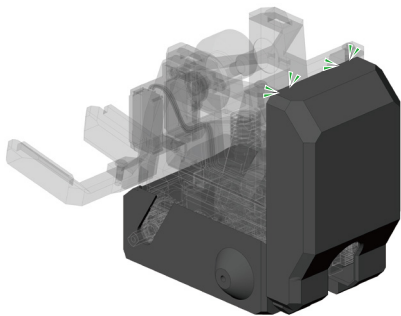
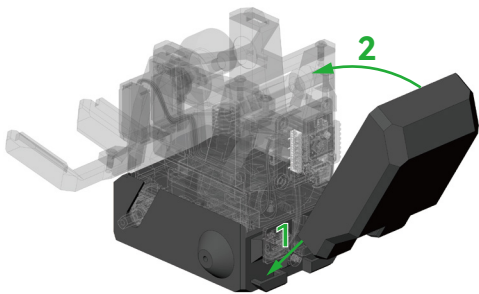
59

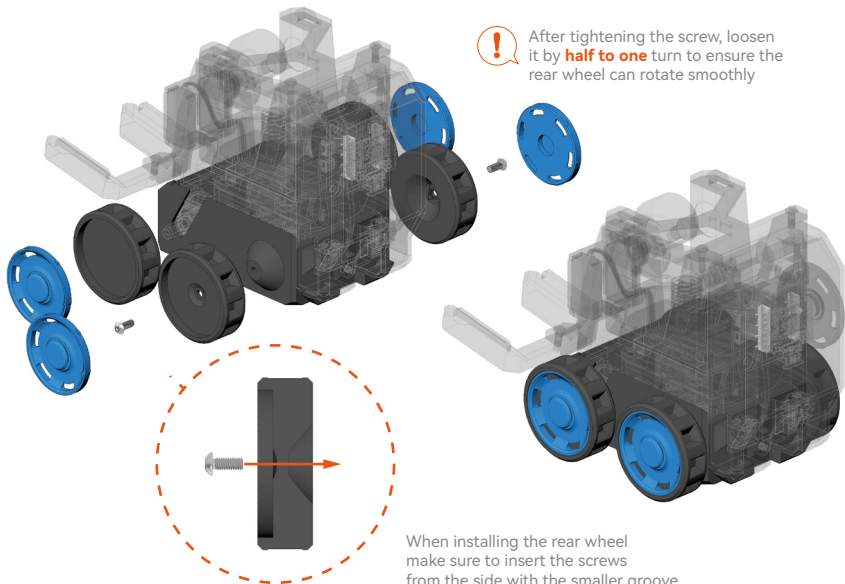


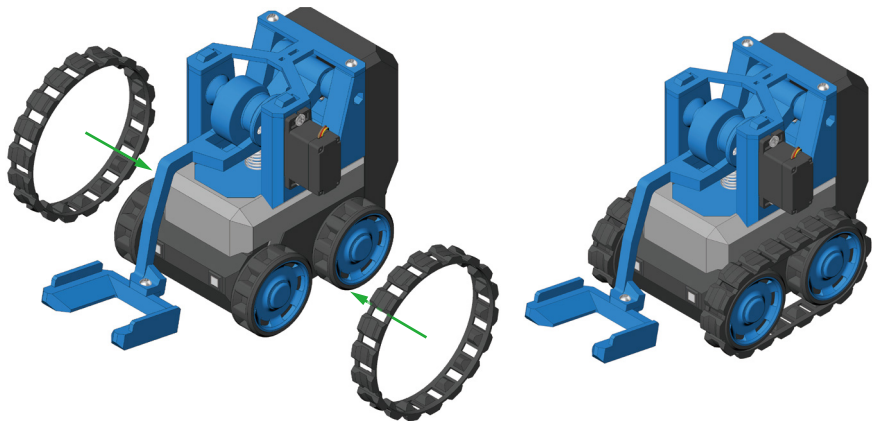
Please use 4x2 mm Round Magnet

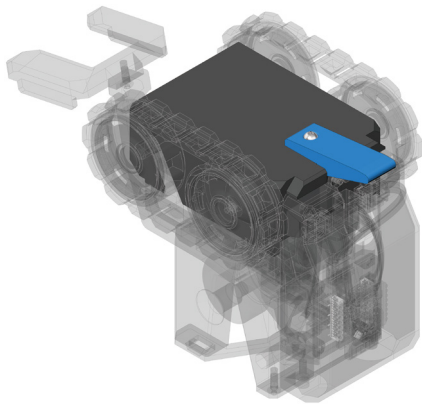
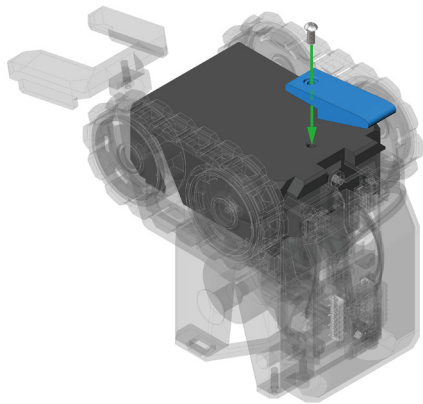


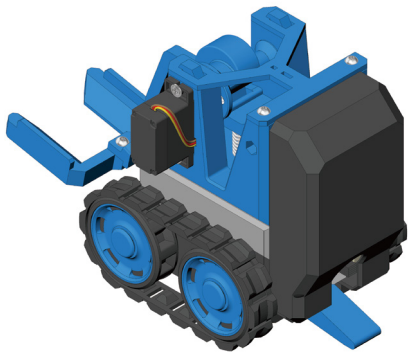
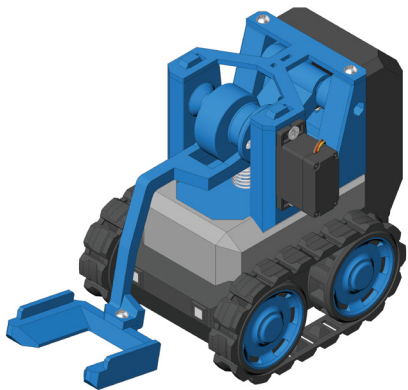
60



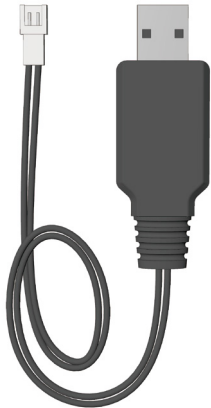






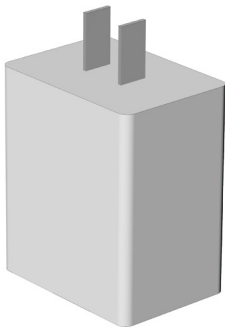


Charging Process



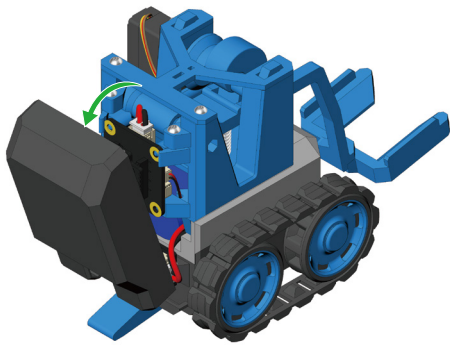
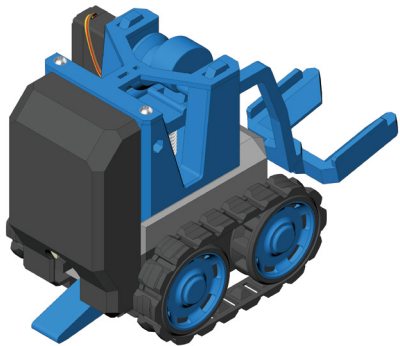
USB Charger 1x

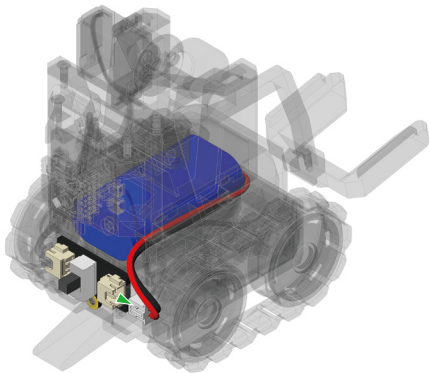
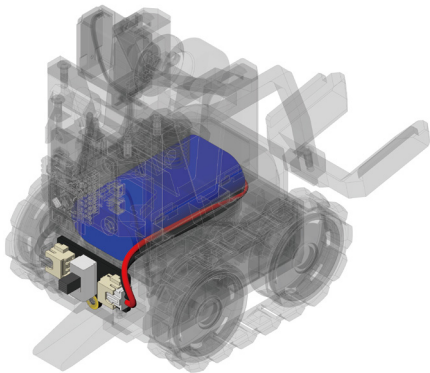
Accessories

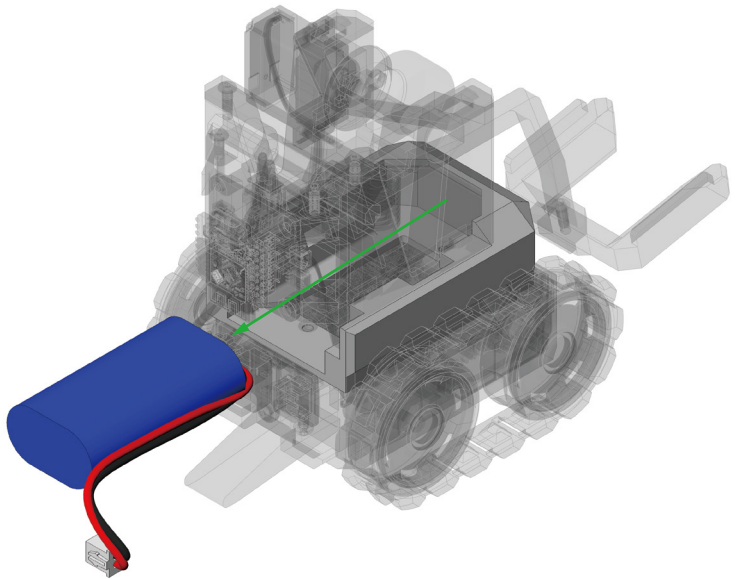


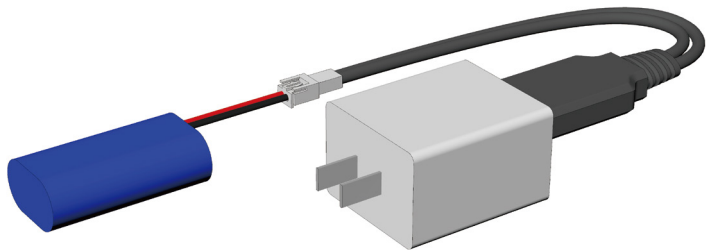
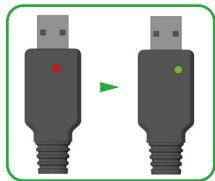
Power Adapter 5V 1-2A

Not included









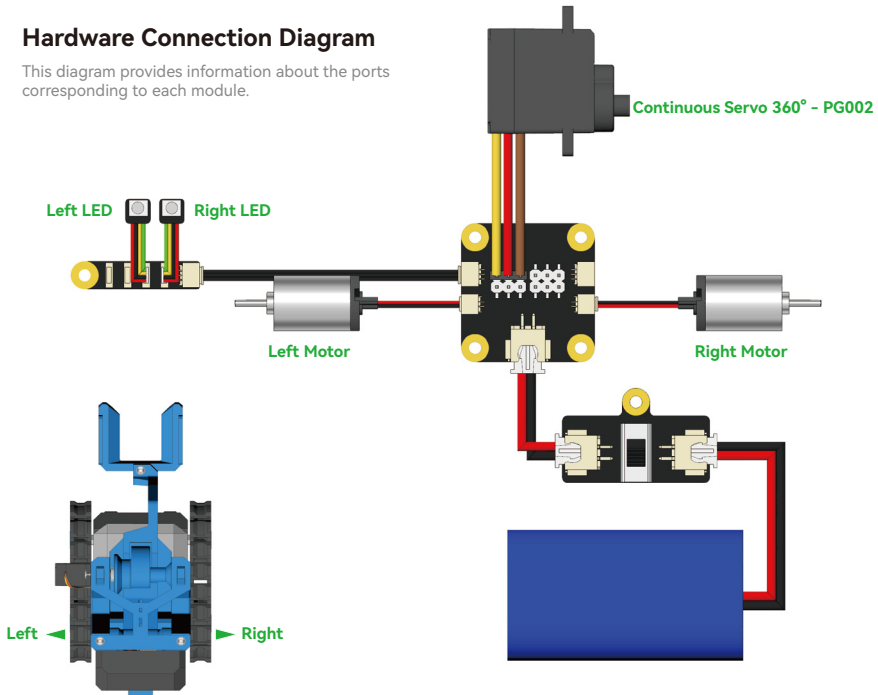
Use a 5V 1-2A power adapter to connect the USB charger as shown in the image to charge the battery.

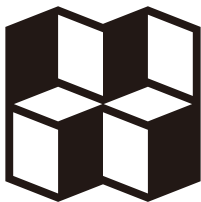
While charging, the red indicator on the power adapter remains solid; it turns solid **green** when charging is complete.

**Note: Please remove the battery from the model before charging!
Do not leave the charging process unattended!
Once charging is complete, promptly disconnect the power and remove the battery!**

Hardware Connection Diagram

This diagram provides information about the ports corresponding to each module.





MakerWorld

<https://makerworld.com/zh>
<https://makerworld.com/en>