

# Assembly Guide

## Truck

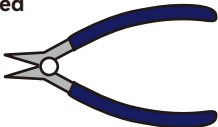


**MakerWorld**

## Additional Tools You'll need



Instant Glue



Diagonal Cutters



Tweezers



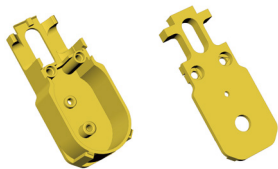
PH1 Philips Driver



H1.5 Hex Driver

- Please ensure safe use of sharp tools and instant glue; safety first in everything you do!
- The model contains many small parts. Please prepare a container to store them and prevent loss.
- For parts to be glued together, first assemble them loosely to check the fitting before applying glue.
- Depending on your assembly skills, the assembly time can vary from 1 to 3 hours. If you encounter any troubles, do not feel discouraged. Please leave a message on the model page or seek help in the community.
- Let's build it!

## Reduction Gearbox Assembly



1x

1x

### Printed Parts



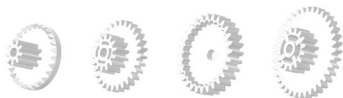
Find the accessories by referring to the name on the label.

**1:48 Single-axis Plastic Reduction Gear Kit (1PCS) - LA016**

**1:48单轴减速齿轮包 LA016**

Manufacturer: Shenzhen Tuozhu Technology Co., Ltd.

生产商: 深圳拓竹科技有限公司



1x

1x

1x

1x



1x



2x

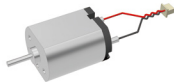


2x



1x

**1:48 Single-axis Plastic Reduction Gear Kit (1PCS) - LA016**



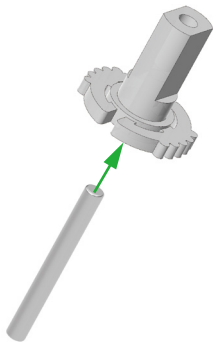
1x



1x

### Accessories

1

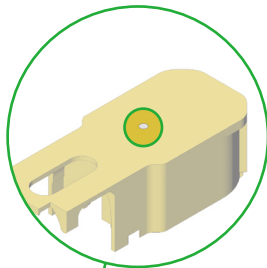
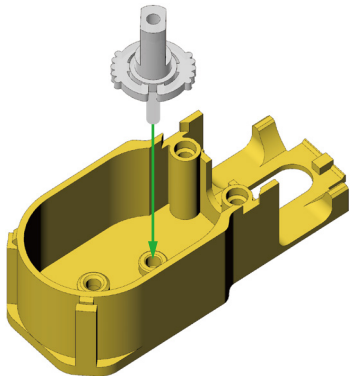


During **Steps 1-5**  
This accessory serves as an assembly aid.  
It will be used again in **Step 7**.

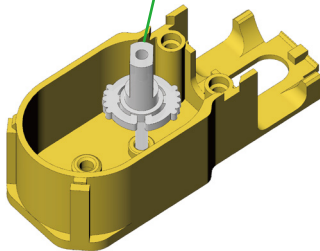




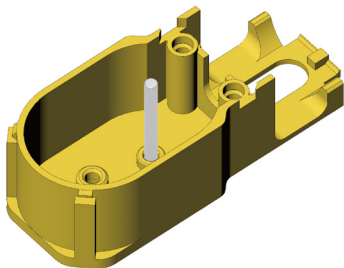
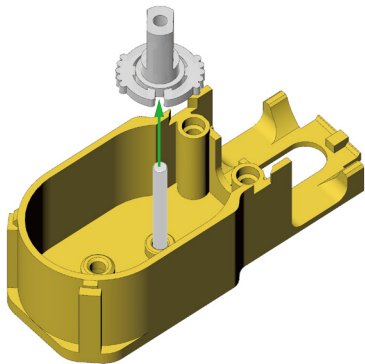
2



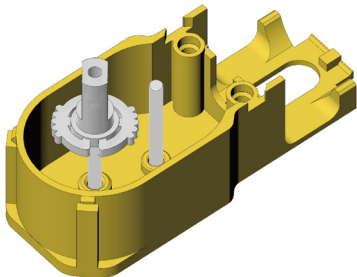
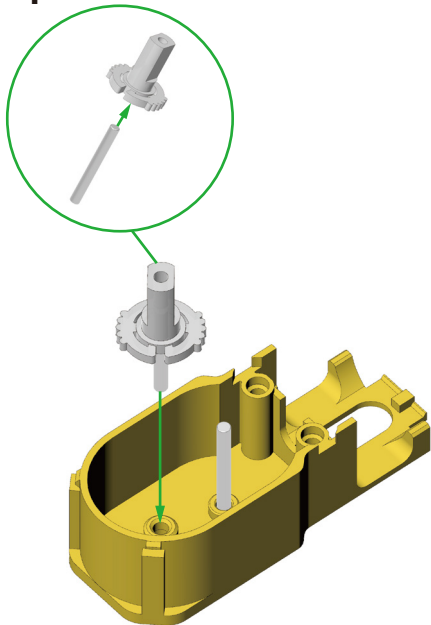
Check from the rear of the printed parts if the pin is fully seated.



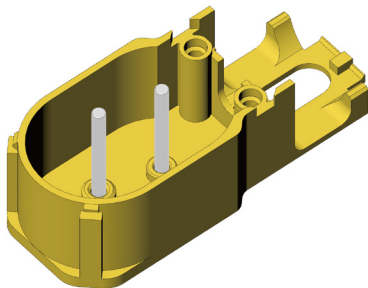
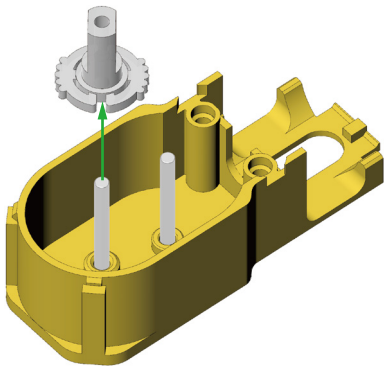
3



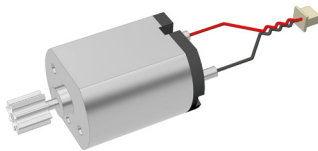
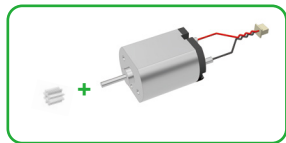
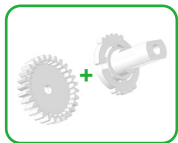
4



5



6



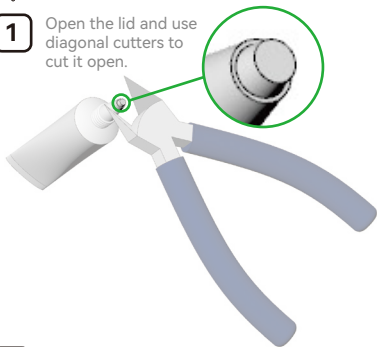
7



**Assemble the gears: Use lubricant.**

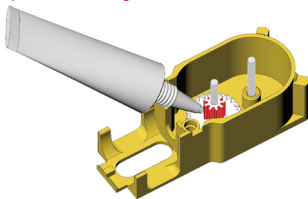
1

Open the lid and use diagonal cutters to cut it open.

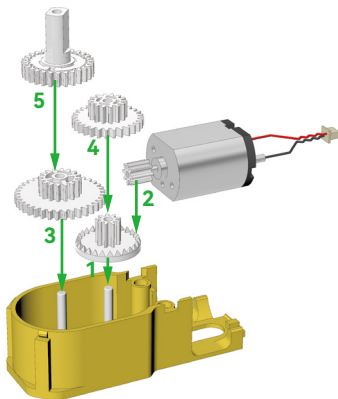
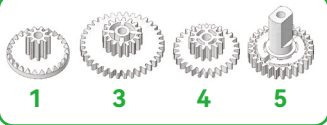


2

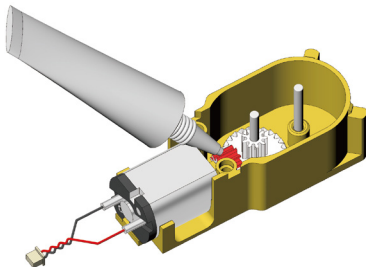
After assembling each gear, apply a small amount of lubricant to the highlighted position of the gear.



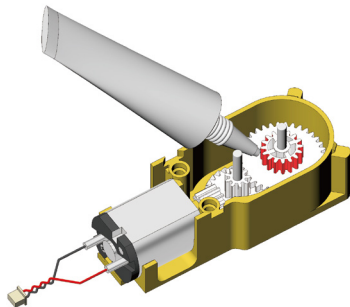
**Assembly the gears: Assembly sequence**



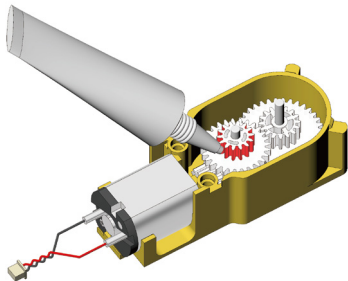
3



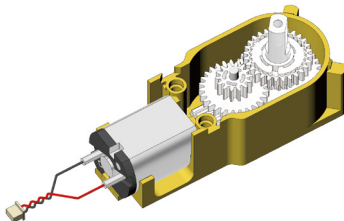
4



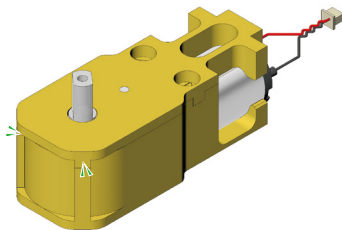
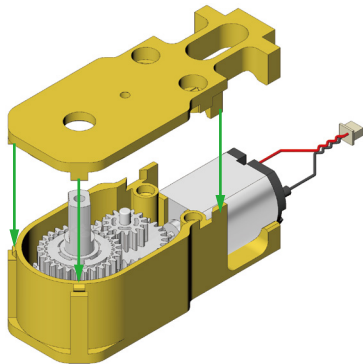
5



6



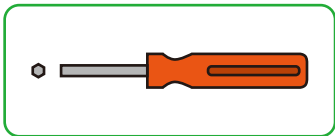
8



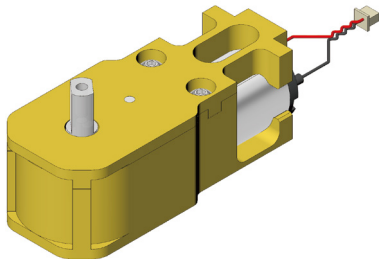
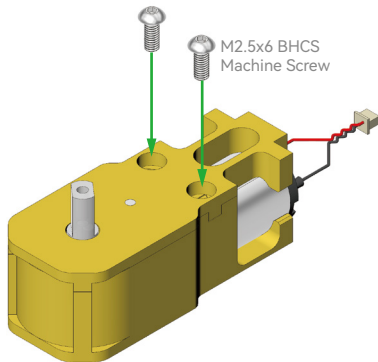
You will hear a 'click' when  
the parts are in place



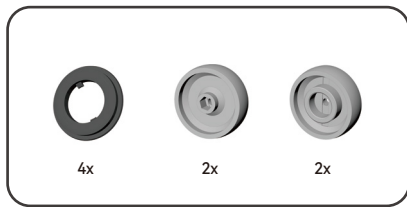
9



Please use H1.5 Hex Driver



# Wheels Assembly

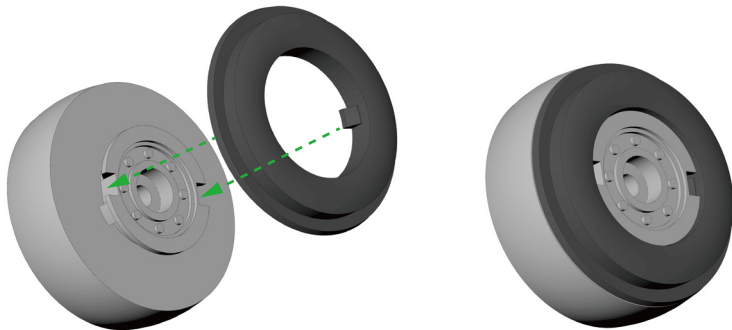


Printed Parts

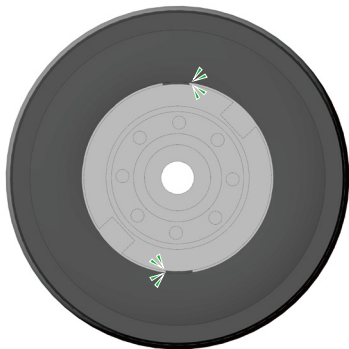
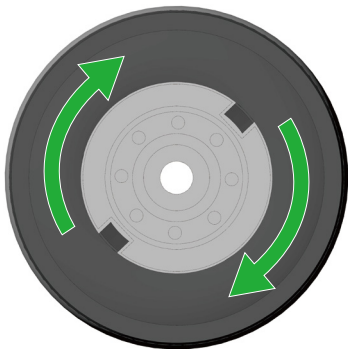


Accessories

10

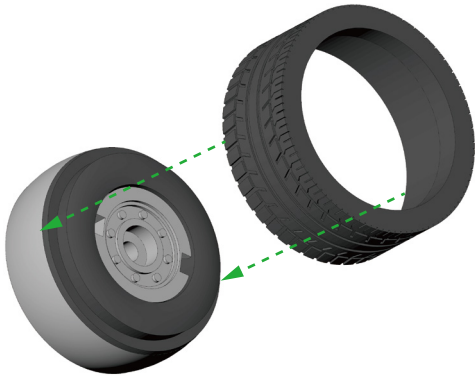


11



After aligning the part with the slot, rotate the part clockwise until it is fully tightened.

12



Make sure not to install it  
in the wrong direction.





Repeat the above steps to get four wheels.

# Steering Mechanism Assembly



1x



1x



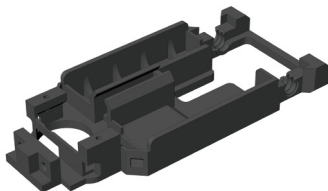
1x



2x



1x



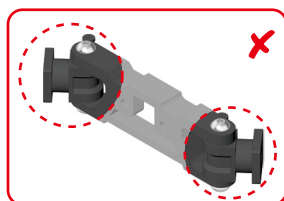
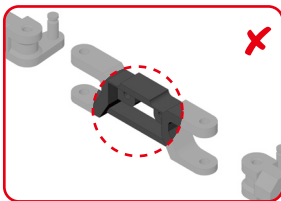
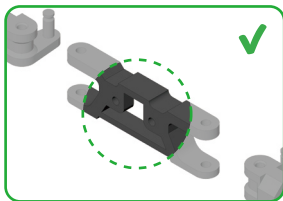
1x

**Printed Parts**



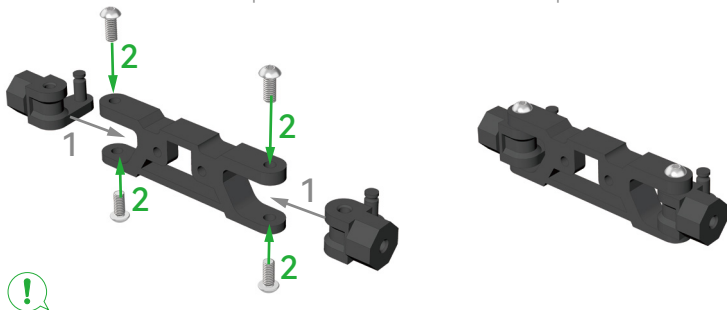
6x

**Accessories**



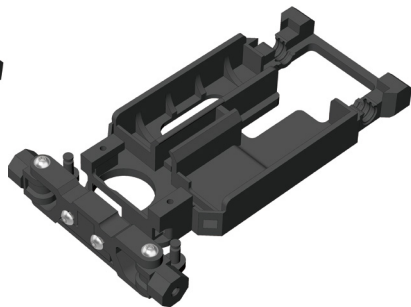
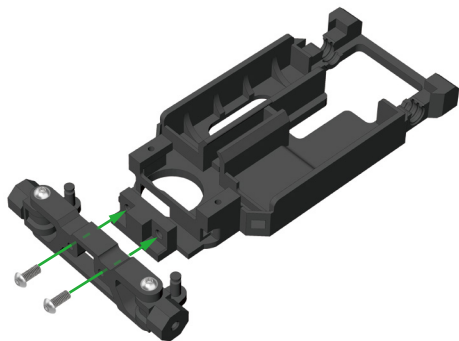
Please assemble the following parts in the correct orientation.

Please assemble the following parts in the correct orientation.



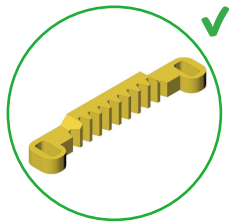
After tightening the four screws installed in **Step 2**, loosen them by **one** turn to ensure that the part installed in **Step 1** can rotate smoothly.

15

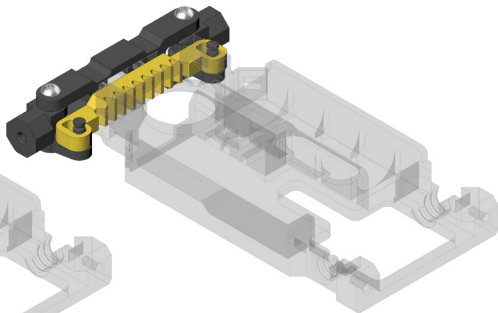
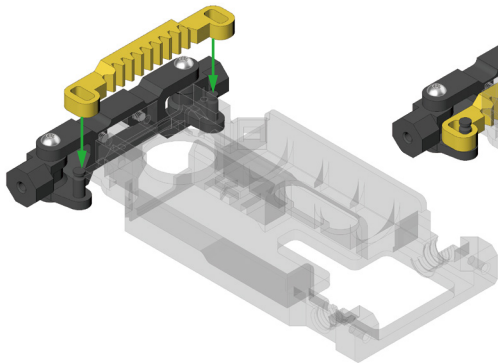




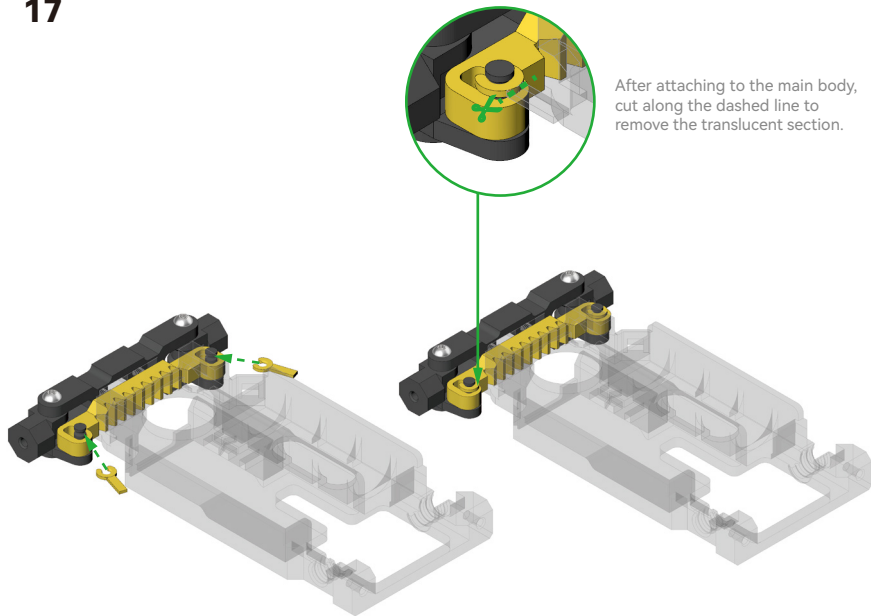
16



Pay attention to the installation direction of the parts.



17



## Steering Servo Assembly



1x



1x



2x



1x

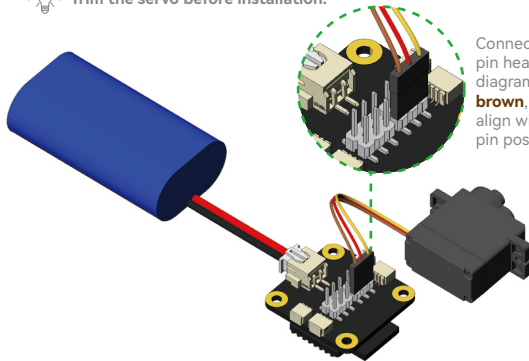


1x

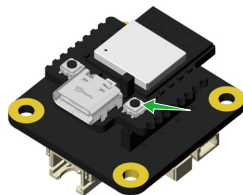
Printed Parts    9g Servo Motor with Clutch Protection - PG001    Accessories



Trim the servo before installation.



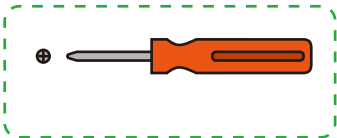
Connect the servo wire to the pin header S1 as shown in the diagram, ensuring that the **brown**, **red**, and **yellow** wires align with their corresponding pin positions.



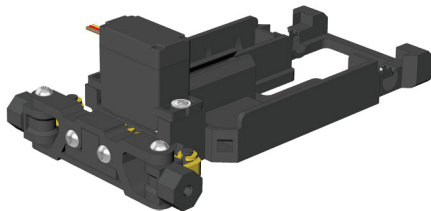
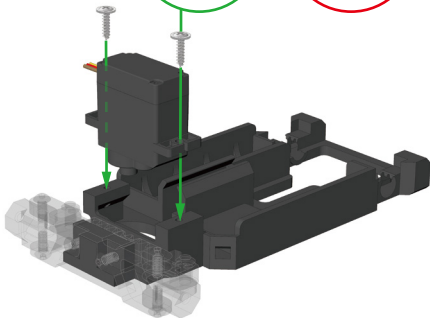
1 Plug in the Remote Control Receiver Assembly and the Battery

2 Press the black button

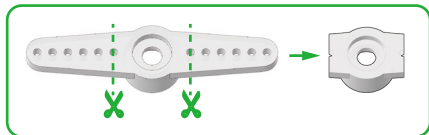
18



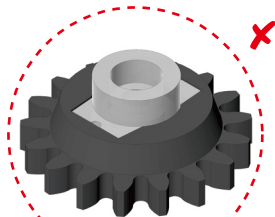
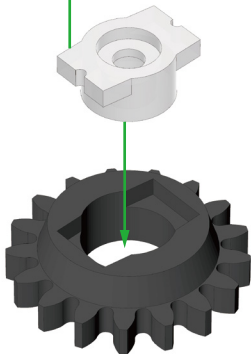
Please use PH1 Philips Driver



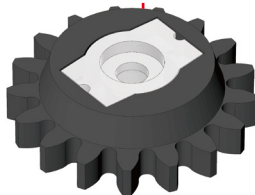
19



Trim the servo arm along the dashed line.



Be careful not to install the servo arm backwards.

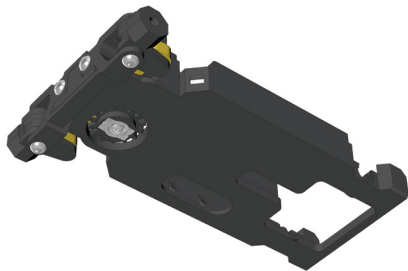
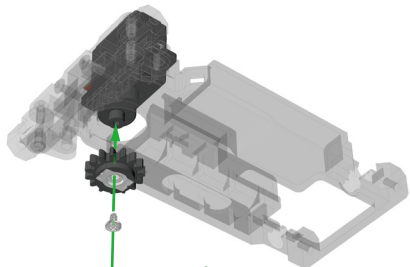


Ensure that the trimmed rudder arm can fit in and will not rotate in the slot.

20



Assemble the gear after ensuring both bogies are level.



## Rear Differential and Gearbox Assembly



1x



1x



1x



1x



1x



1x



1x

Printed Parts



2x



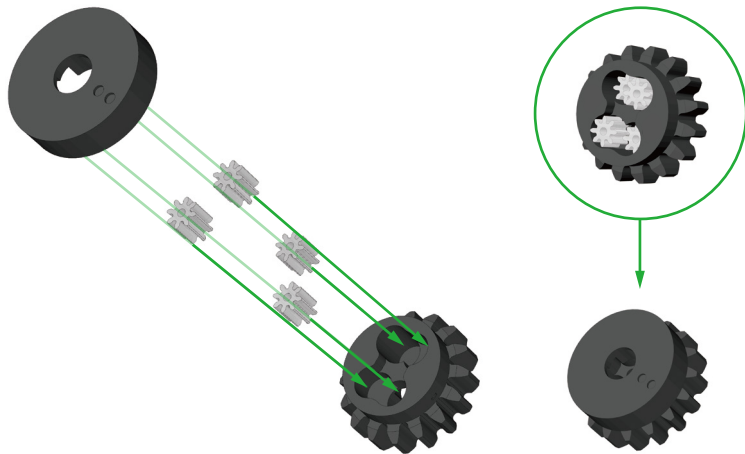
2x



4x

Plastic Differential  
Gear Kit LA026

Accessories

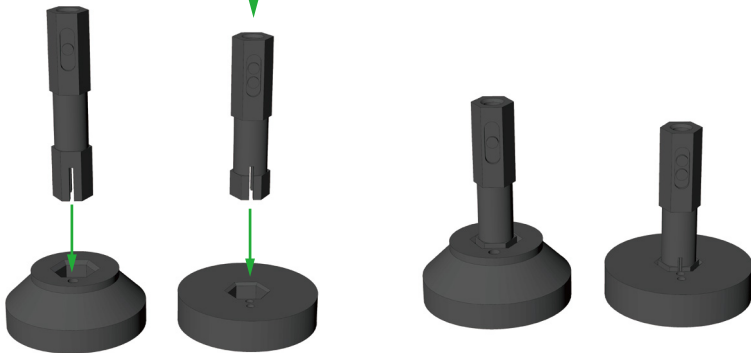




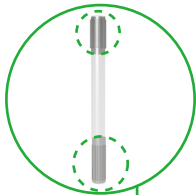
22



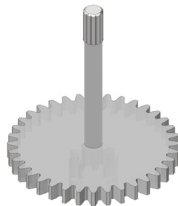
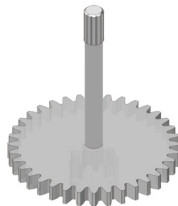
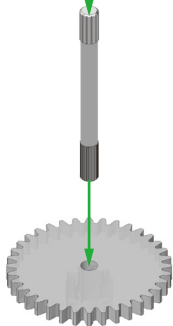
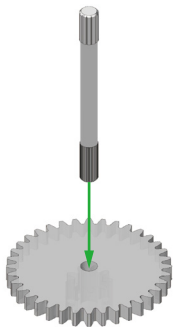
Pay attention to the dot markings on the printed parts and match parts with the same number of dots.

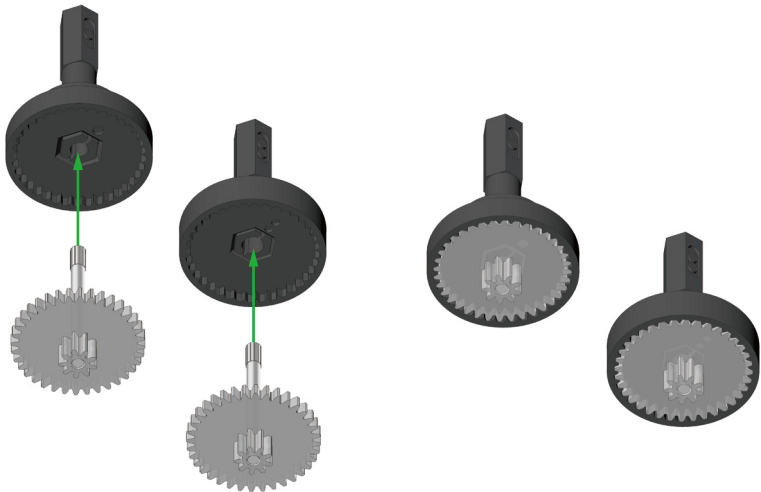


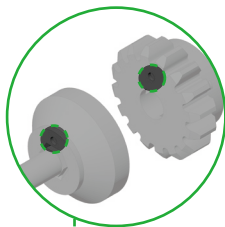
23



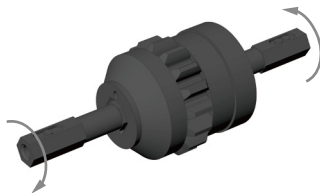
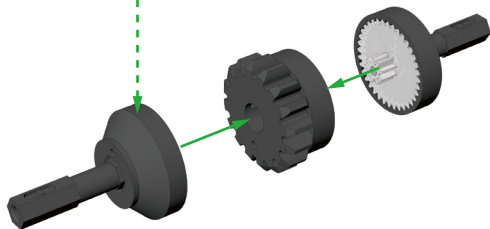
Ensure the coarse knurl faces upward  
and the fine knurl faces downward.







Pay attention to the dot markings on the printed parts and match parts with the same number of dots.



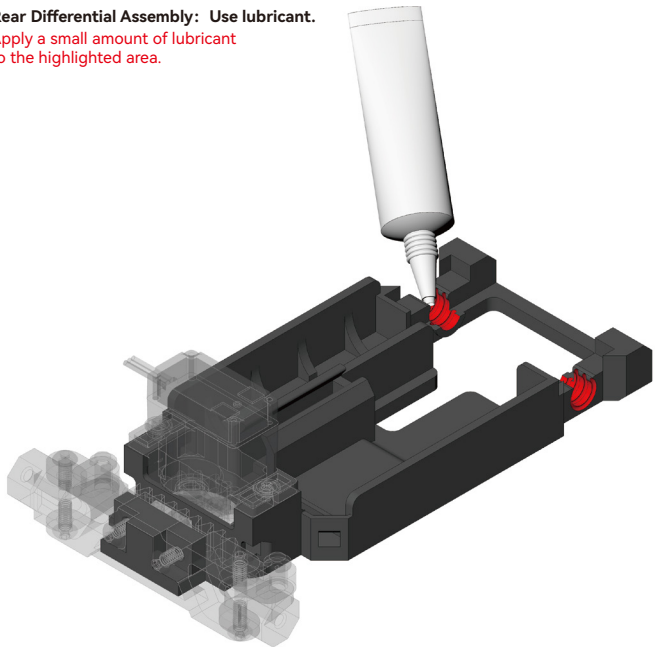
Rotate both ends to ensure smooth movement.

26

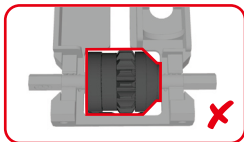
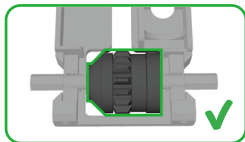


**Rear Differential Assembly: Use lubricant.**

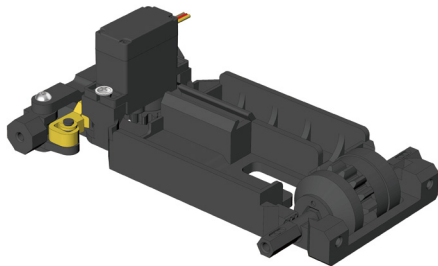
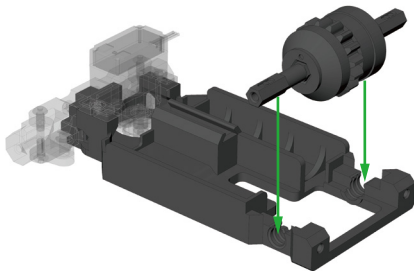
Apply a small amount of lubricant  
to the highlighted area.

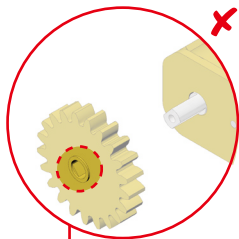


27

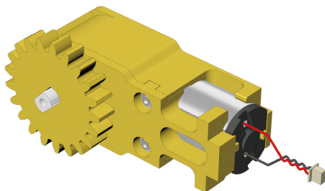
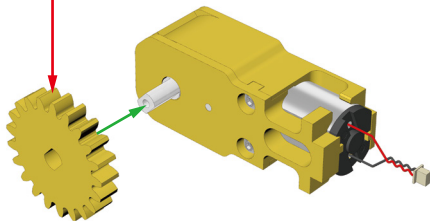


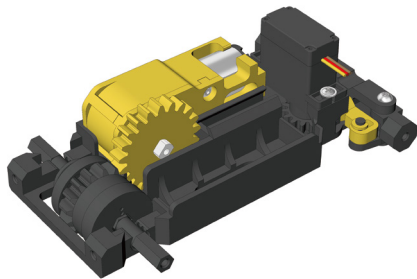
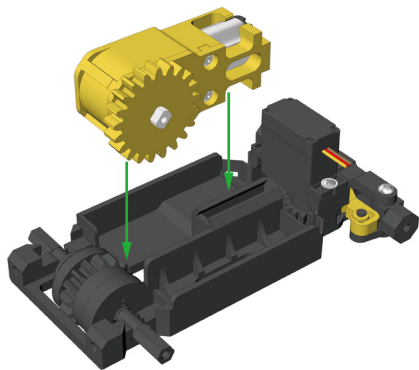
Position the differential with the smaller cross-sectional end facing to the left.





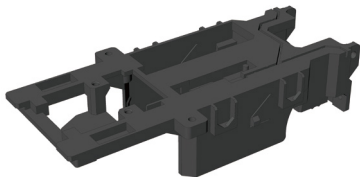
✗ Position the part with the protrusion facing the gearbox.







# Chassis and Wheel Assembly



1x

**Printed Parts**



6x



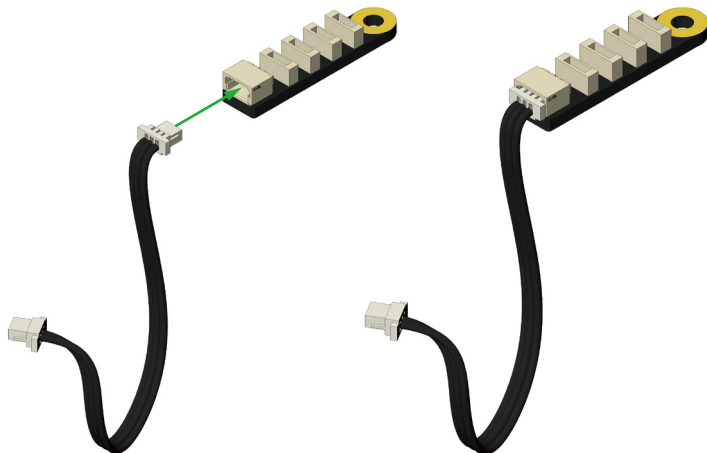
1x



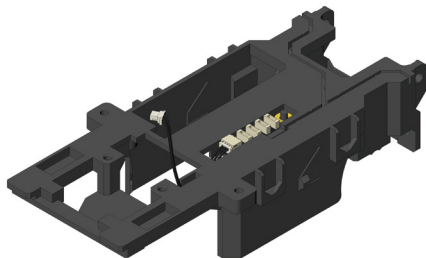
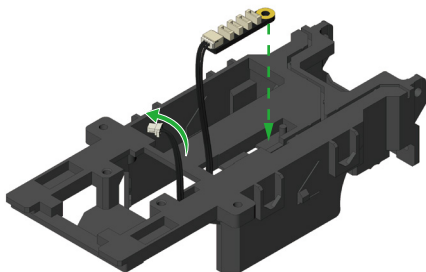
1x

**Accessories**

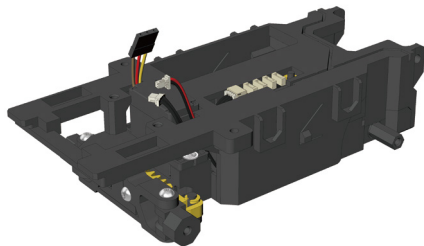
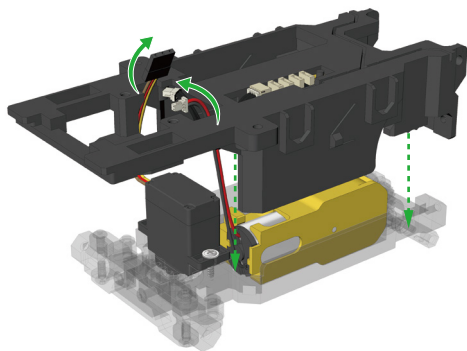
30

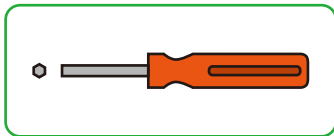


31



32

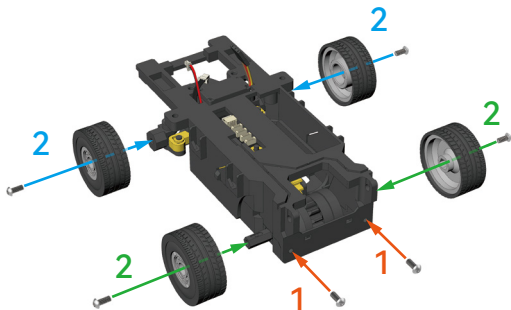




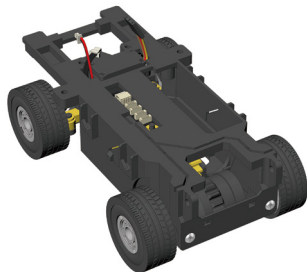
Please use H1.5 Hex Driver



After fully tightening the screw indicated by the blue arrow, loosen it by **one full turn** to ensure smooth wheel rotation.



Prioritize assembling the two screws indicated by the orange arrows.



## Cabin Assembly



1x



1x



1x



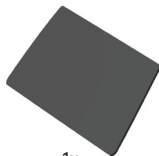
2x



2x



1x



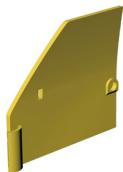
1x



1x



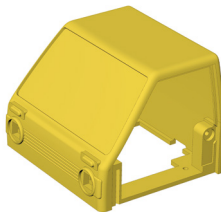
1x



1x



1x



1x

**Printed Parts**



2x



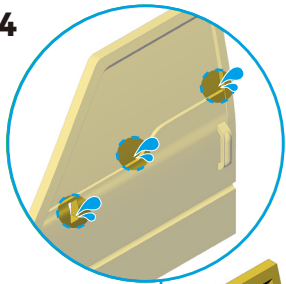
4x2 mm Round Magnet 2x



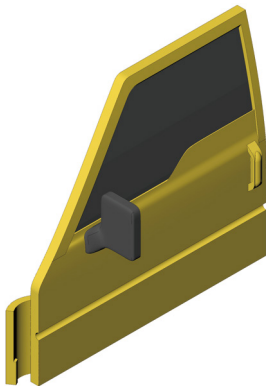
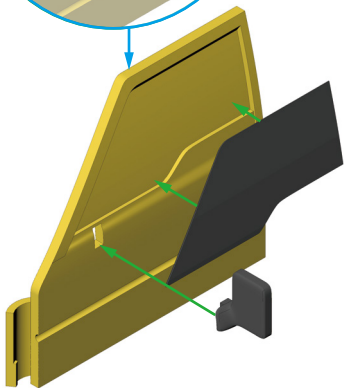
LED with IDC0.8 4PIN 2x

**Accessories**

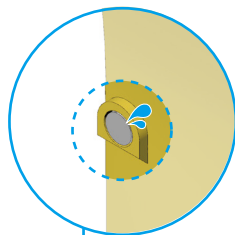
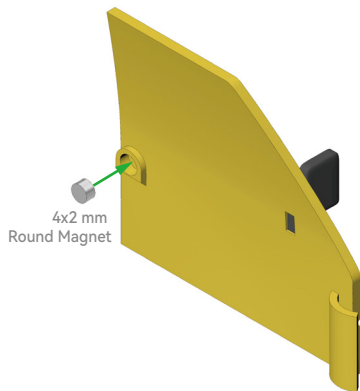
34



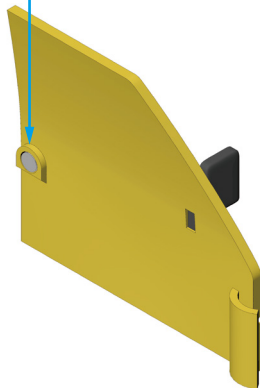
Apply glue to the **three** highlighted areas shown in the diagram to secure the parts in place.



35

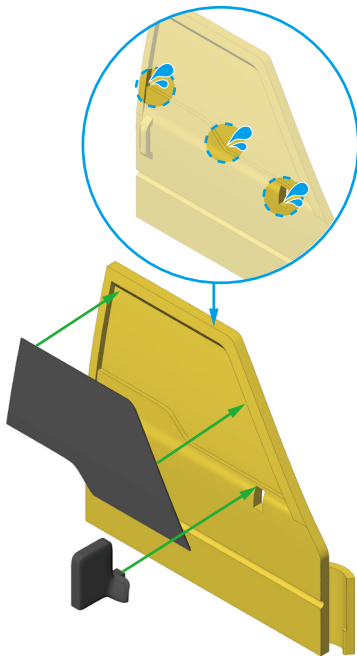


Apply glue to the highlighted area in the diagram and securely attach the part.

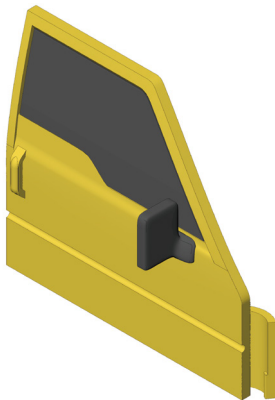




36

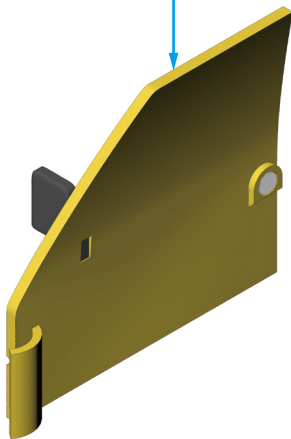
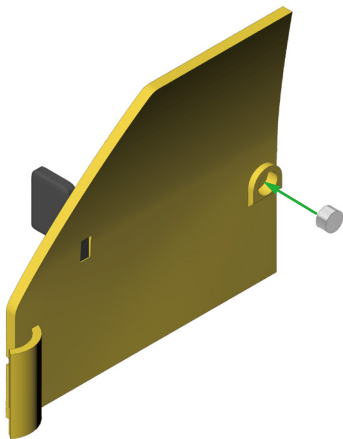
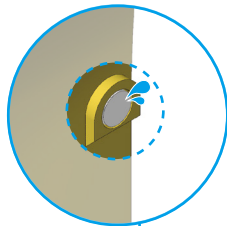


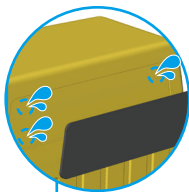
Apply glue to the **three** highlighted areas shown in the diagram to secure the parts in place.



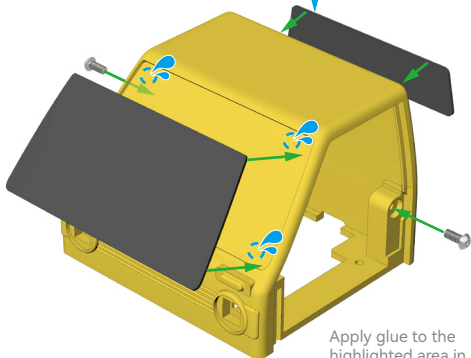
**37**

Apply glue to the highlighted area in the diagram and securely attach the part.

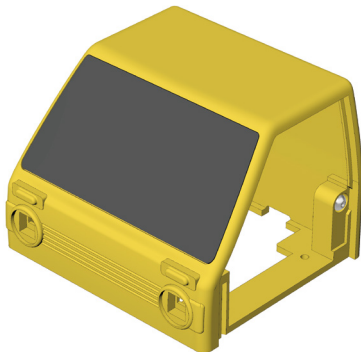




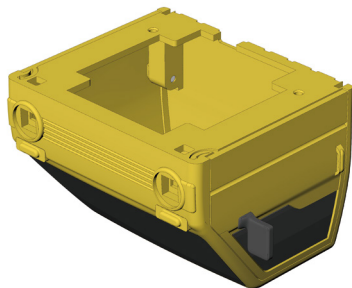
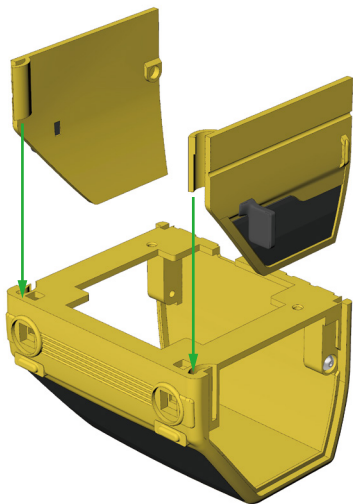
Apply glue to the highlighted area in the diagram and securely attach the part.



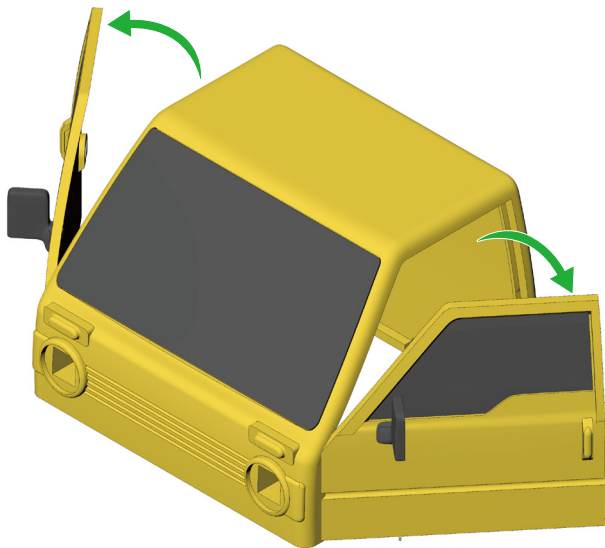
Apply glue to the highlighted area in the diagram and securely attach the part.



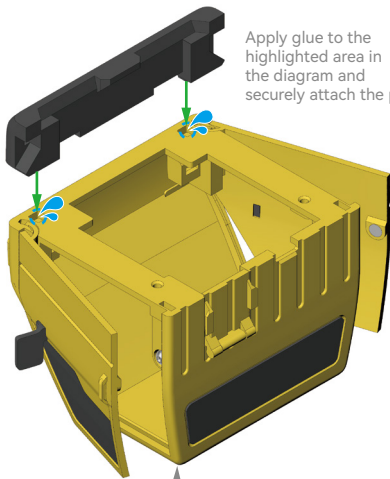
39



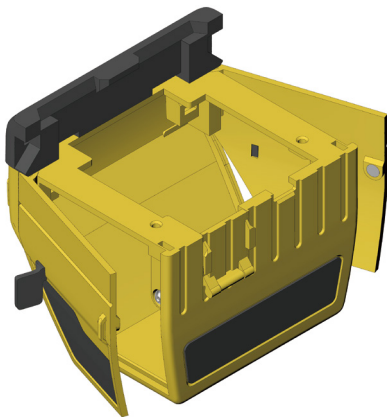
40



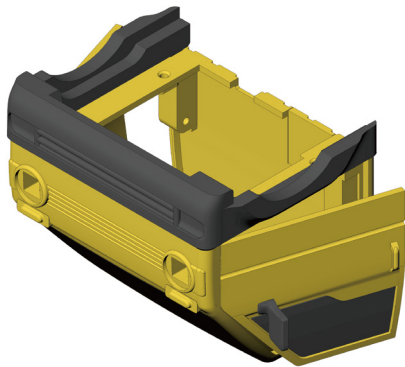
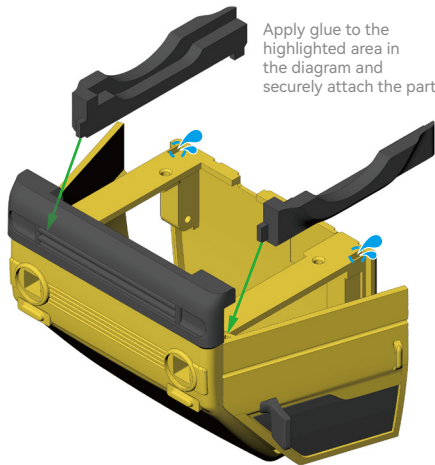
To prevent the car door from  
being sealed shut by the adhesive,  
please open the door before  
proceeding with the following steps.



Apply glue to the highlighted area in the diagram and securely attach the part.



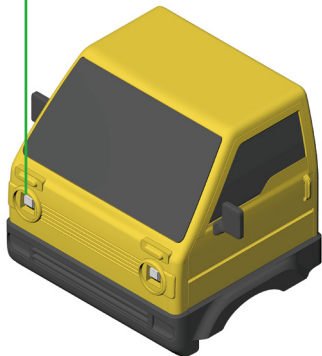
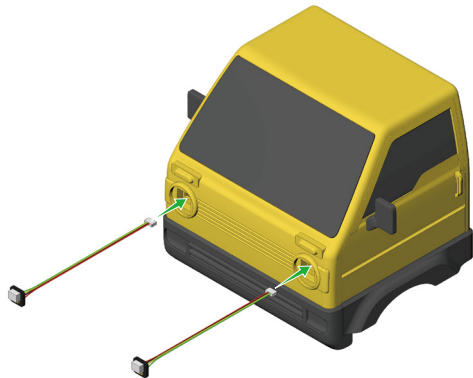
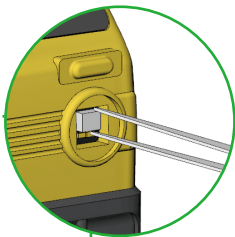
Apply glue to the highlighted area in the diagram and securely attach the part.



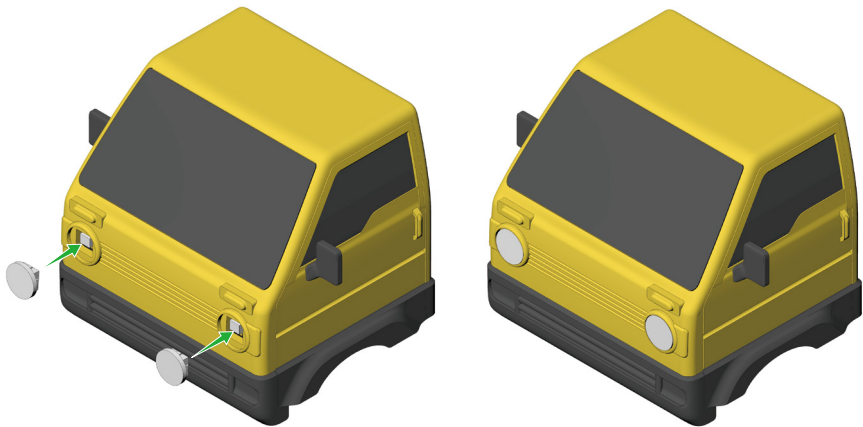
43



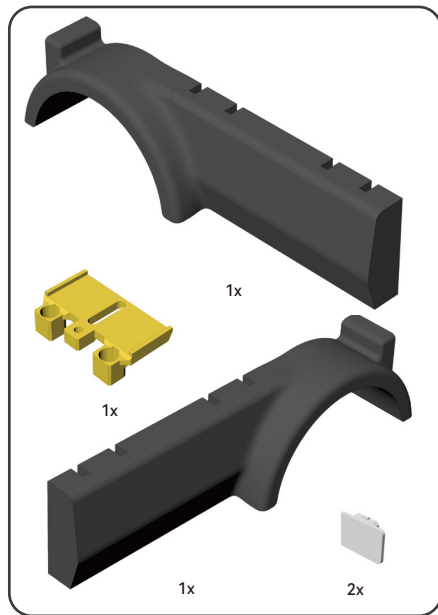
Use **tweezers** to hold the light panel and gently place it flat into the slot.



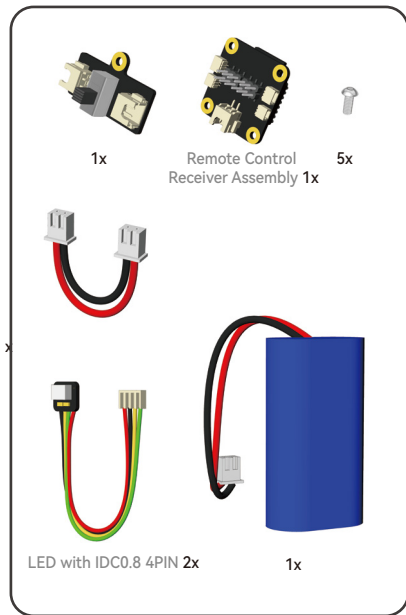




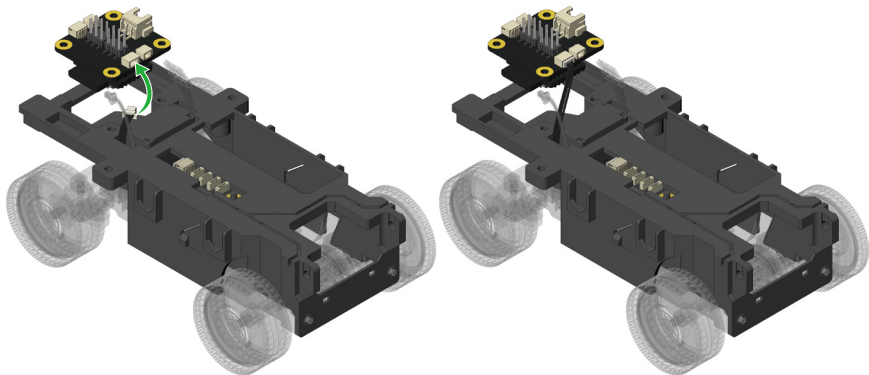
## Electrical Connection



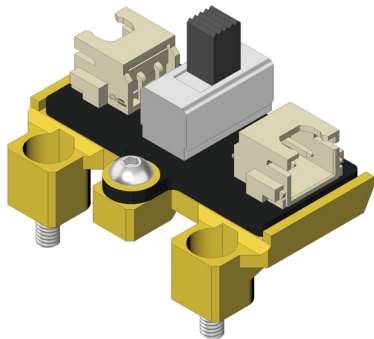
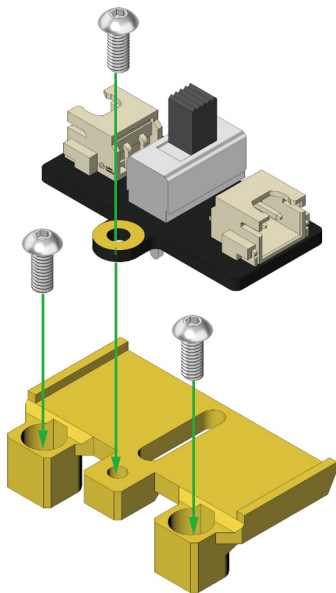
Printed Parts



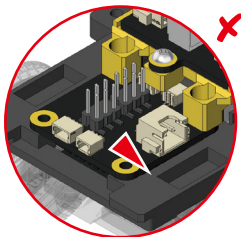
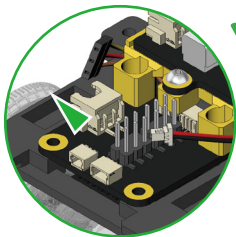
Accessories



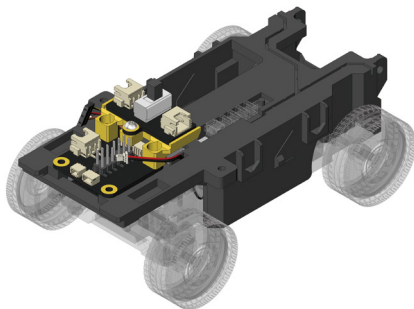
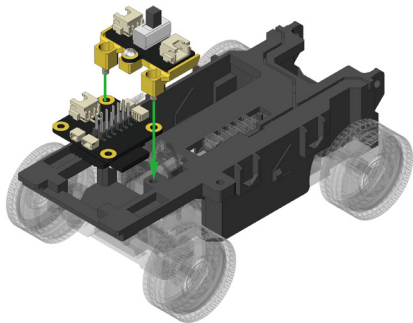
46

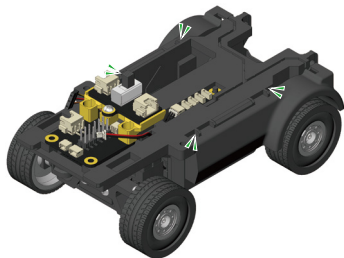
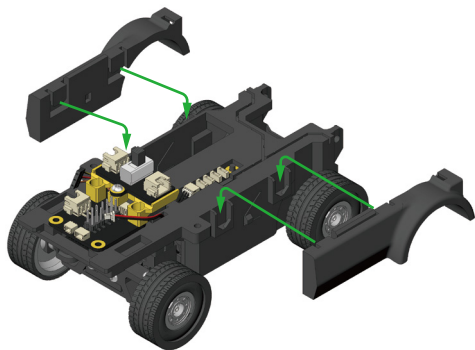


47

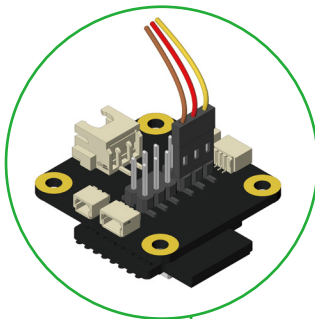
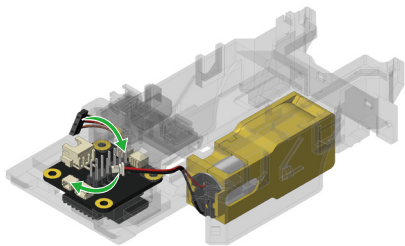


Please pay attention to the orientation of the **Remote Control Receiver Assembly** during installation.

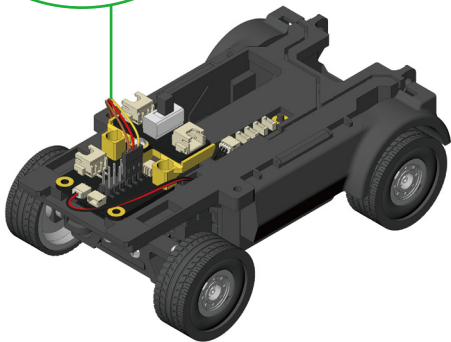




You will hear a 'click' when  
the parts are in place



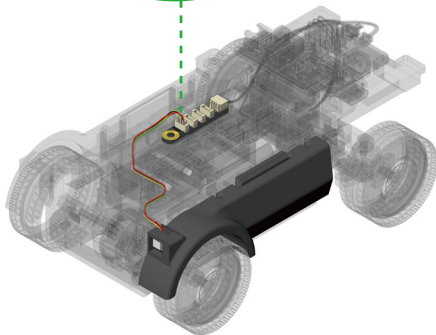
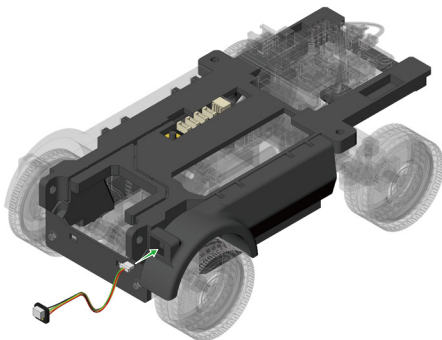
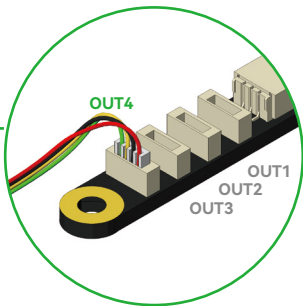
Connect the servo wire to the pin header S1 as shown in the diagram, ensuring that the **brown**, **red**, and **yellow** wires align with their corresponding pin positions.



50

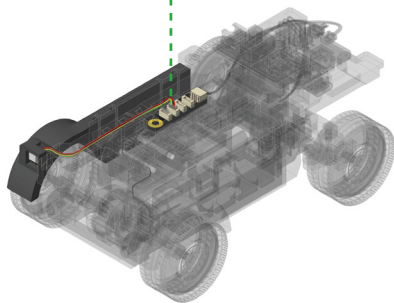
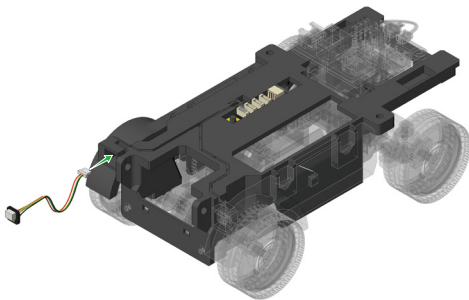
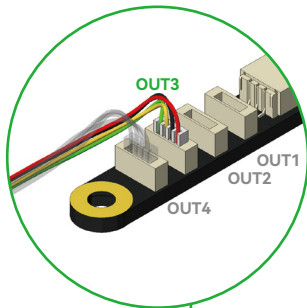


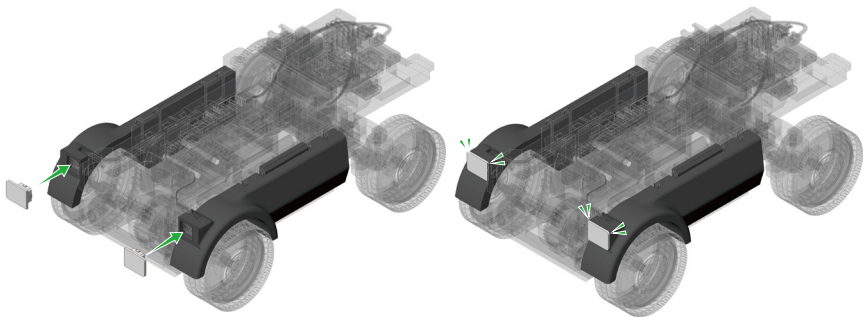
Use **tweezers** to insert the LED terminal into the **OUT4** slot and make sure the direction of the terminal matches the right diagram.



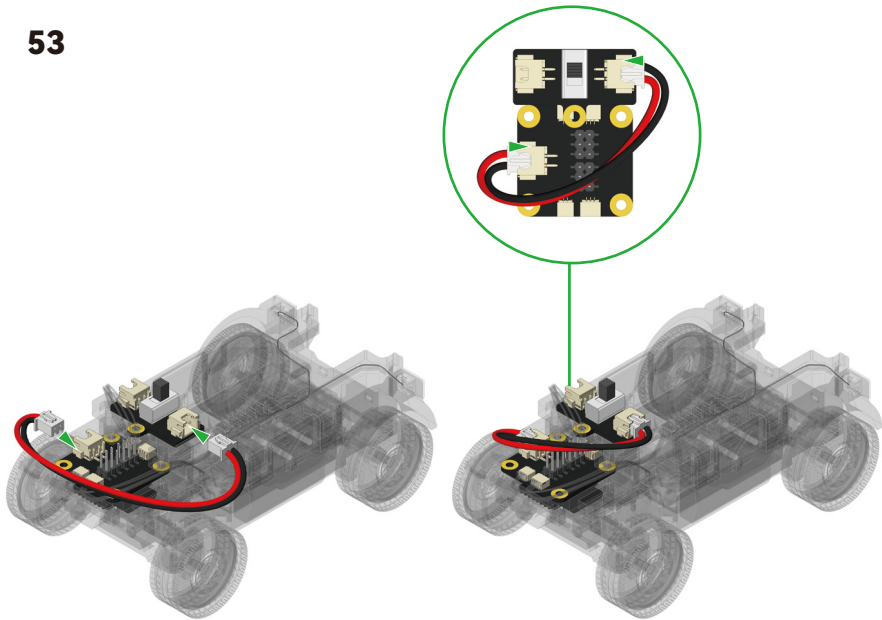


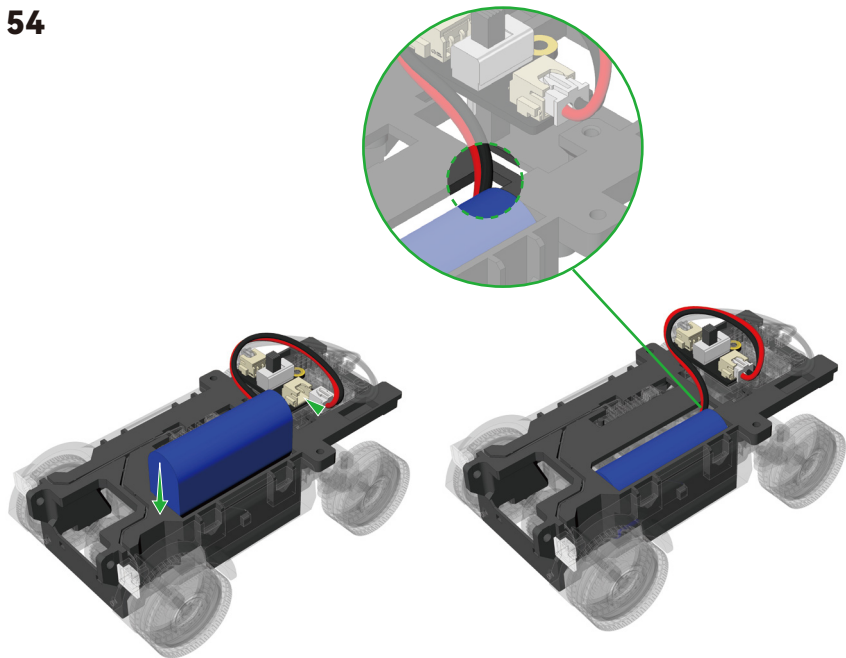
Use **tweezers** to insert the LED terminal into the **OUT3** slot and make sure the direction of the terminal matches the right diagram.

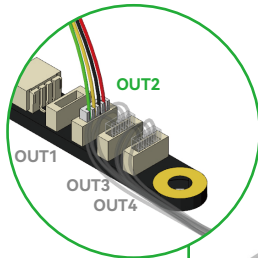




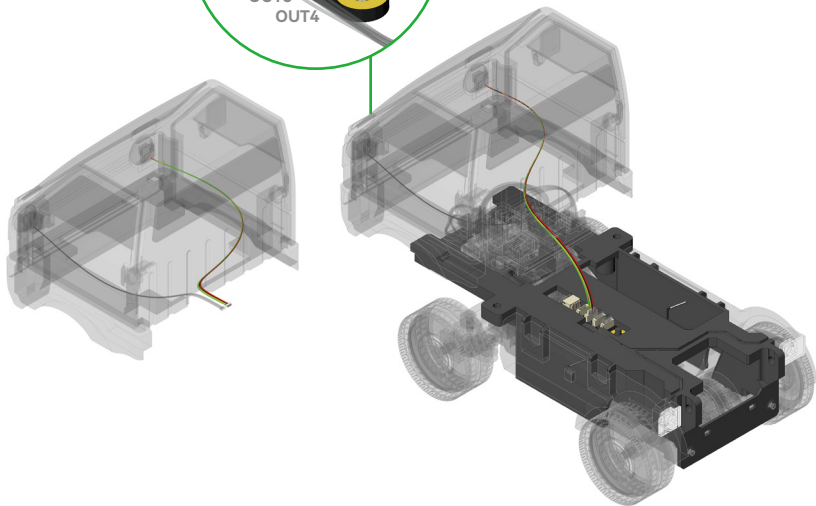
You will hear a 'click' when  
the parts are in place

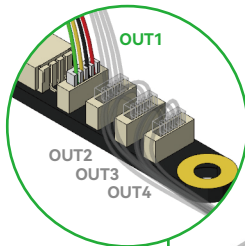




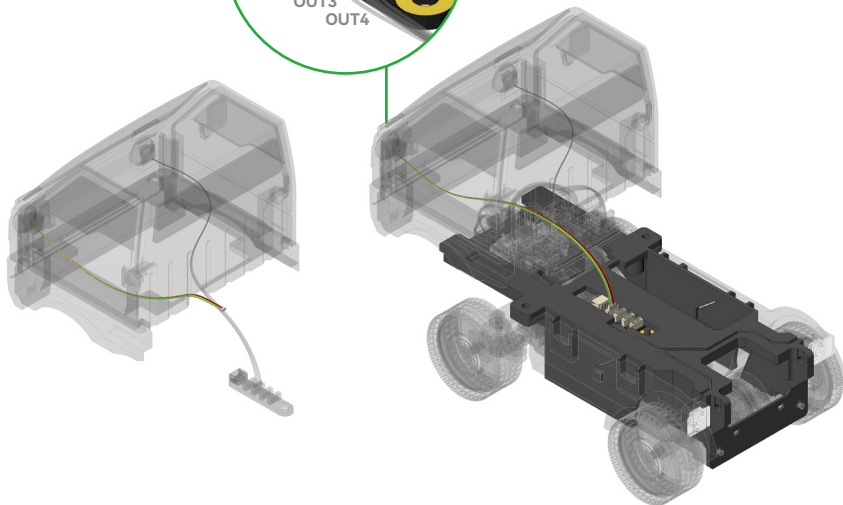


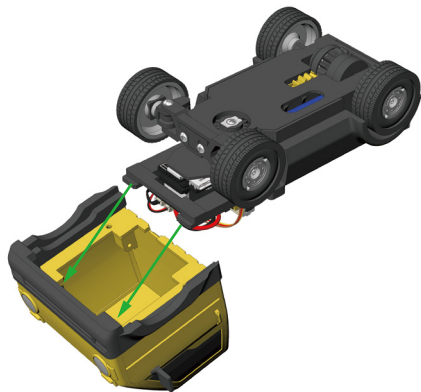
Use **tweezers** to insert the LED terminal into the **OUT2** slot and make sure the direction of the terminal matches the left diagram.



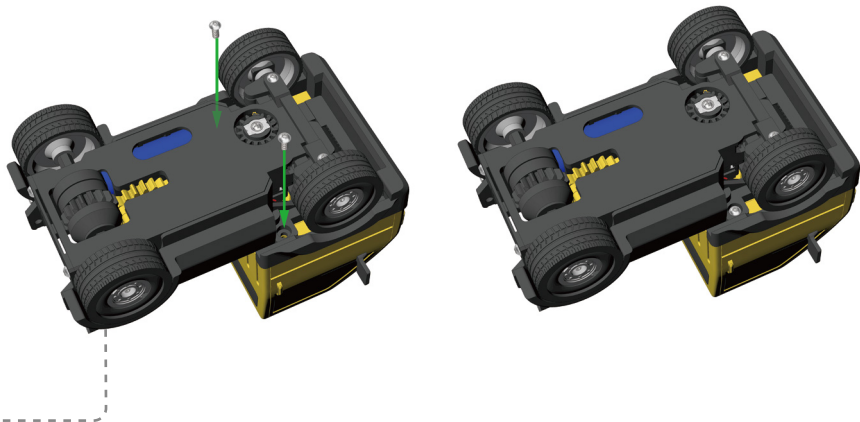


Use **tweezers** to insert the LED terminal into the **OUT1** slot and make sure the direction of the terminal matches the left diagram.





Maintain this state  
until the next step.

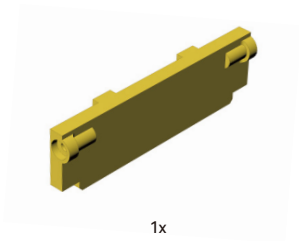




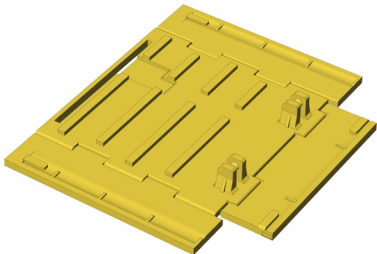
## Truck Bed Assembly



1x



1x



1x

**Printed Parts**

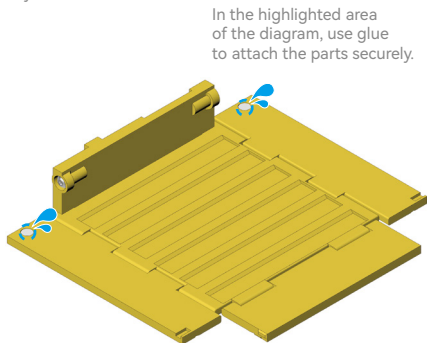
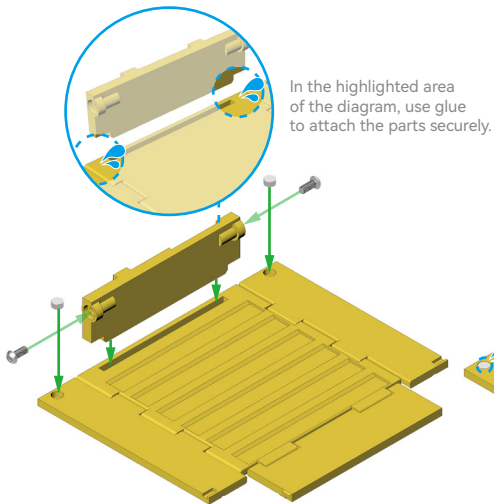


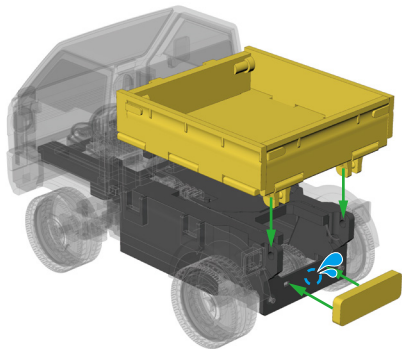
2x



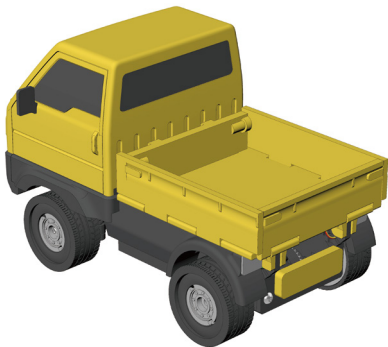
4x2 mm Round Magnet 2x

**Accessories**

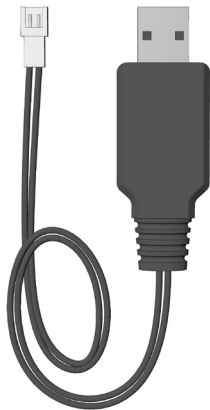




In the highlighted area of the diagram, use glue to attach the parts securely.

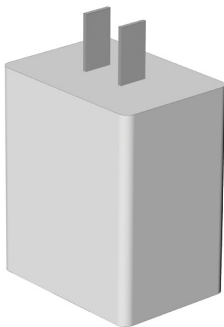


## Charging Process



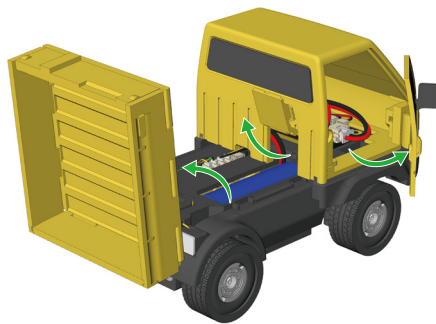
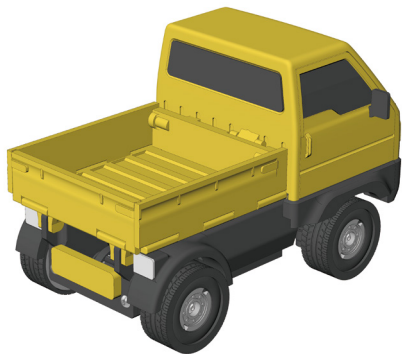
USB Charger 1x

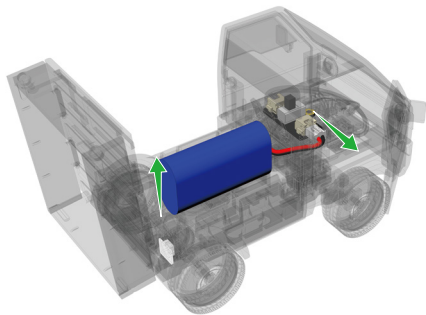
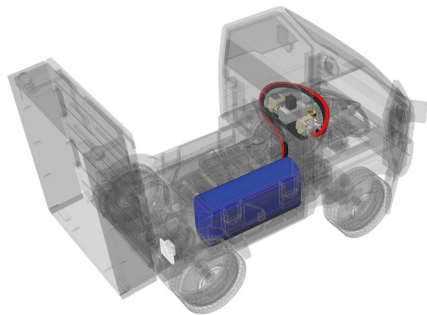
**Accessories**

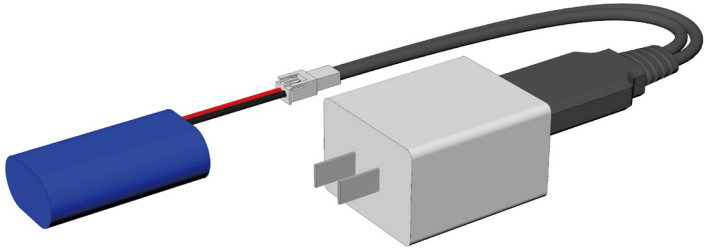
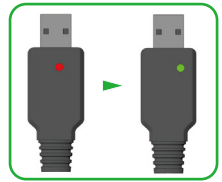


Power Adapter 5V 1-2A

**Not included**





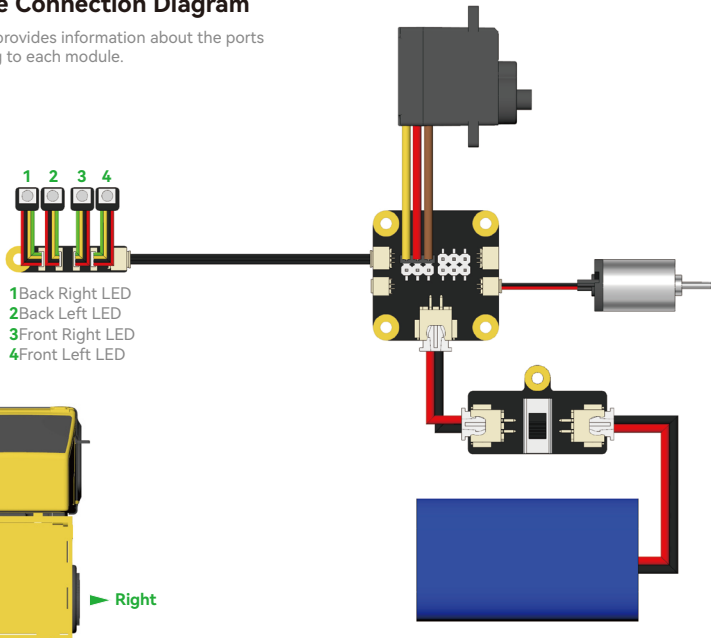


Use a 5V 1-2A power adapter to connect the USB charger as shown in the image to charge the battery. While charging, the red indicator on the power adapter remains solid; it turns solid **green** when charging is complete.

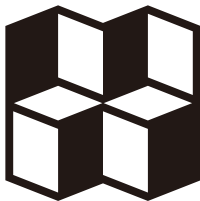
**Note: Please remove the battery from the model before charging!**  
**Do not leave the charging process unattended!**  
**Once charging is complete, promptly disconnect the power and remove the battery!**

## Hardware Connection Diagram

This diagram provides information about the ports corresponding to each module.







**MakerWorld**

<https://makerworld.com/zh>  
<https://makerworld.com/en>