

# Assembly Guide

## Standard Controller



MakerWorld

## Additional Tools You'll need



Instant Glue

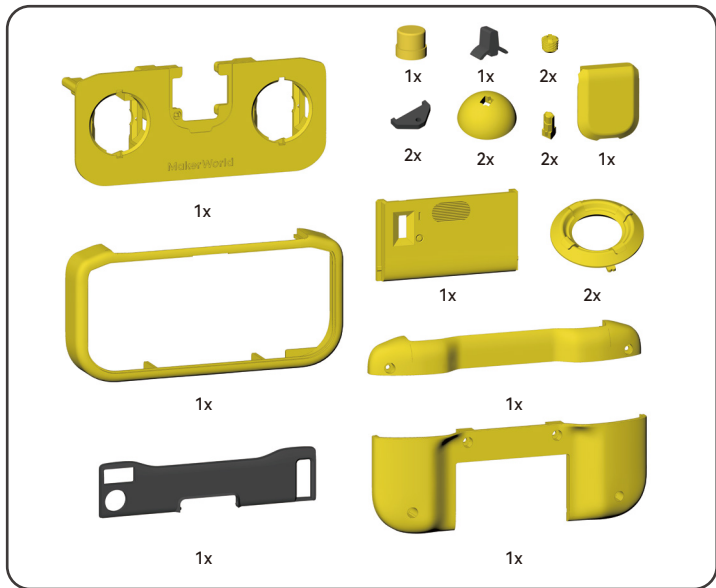


AAA Battery **X3**

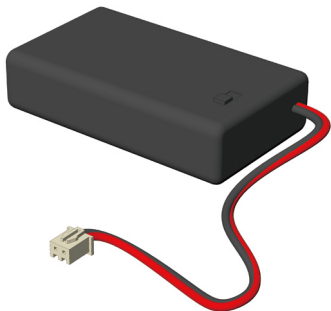


H1.5 Hex Driver

- Please ensure safe use of sharp tools and instant glue; safety first in everything you do!
- The model contains many small parts. Please prepare a container to store them and prevent loss.
- For parts to be glued together, first assemble them loosely to check the fitting before applying glue.
- Depending on your assembly skills, the assembly time can vary from 1 to 3 hours. If you encounter any troubles, do not feel discouraged. Please leave a message on the model page or seek help in the community.
- Let's build it!



**Printed Parts**



1x



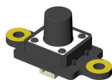
1x



6x



1x



1x



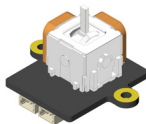
M2.5x6 BHCS Machine  
Screw 21x



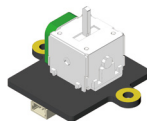
4x2 mm Round  
Magnet 1x



1x



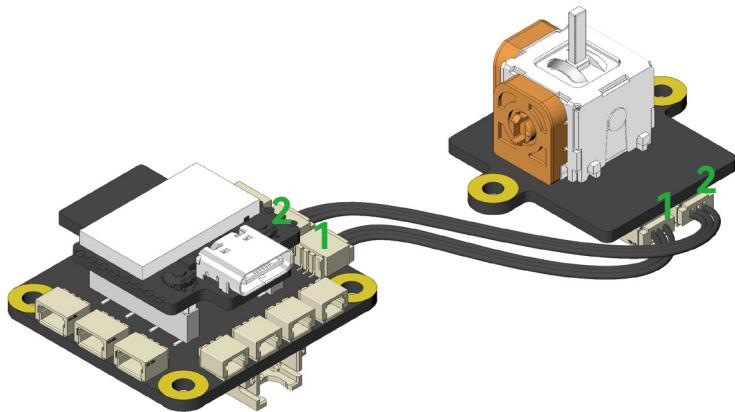
2x



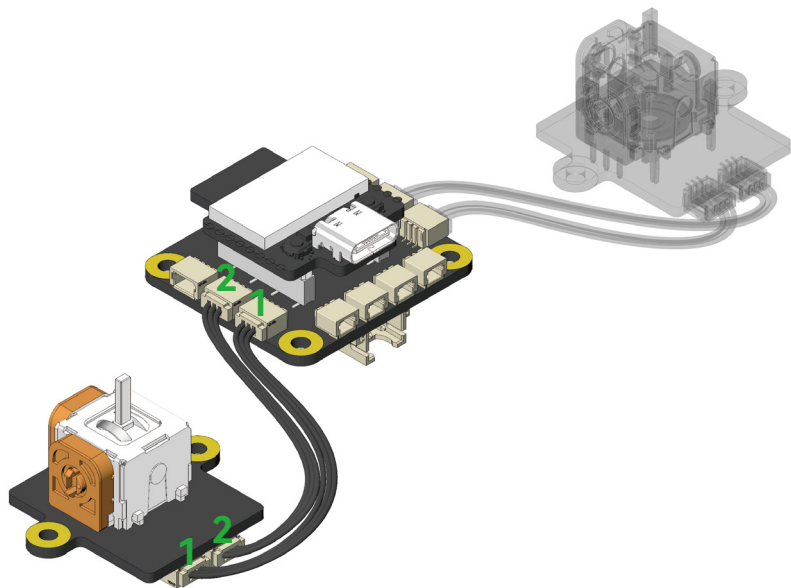
1x

## Accessories

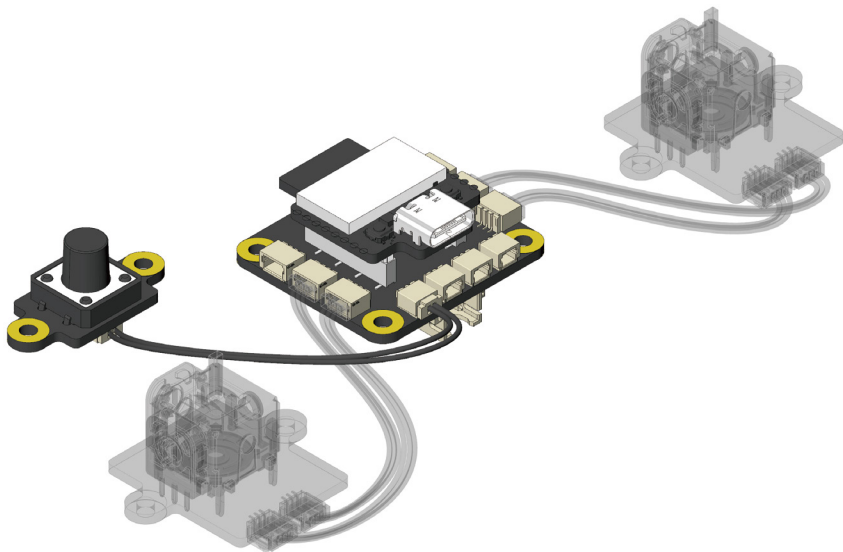
1



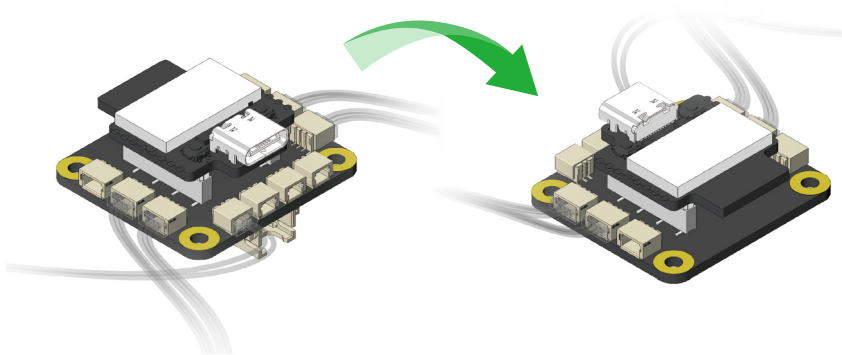
2



3



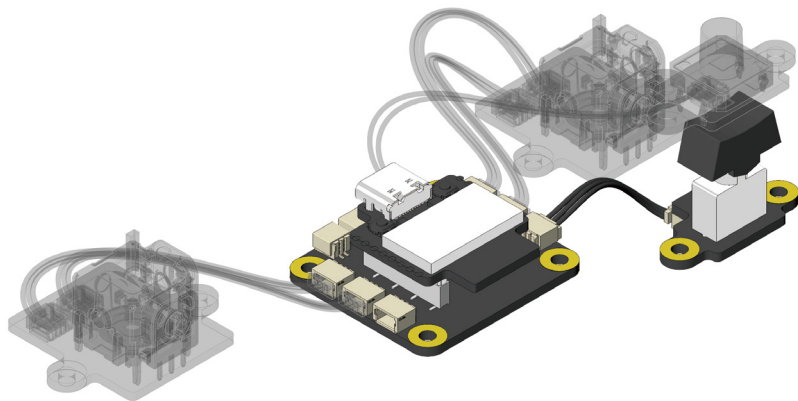
4



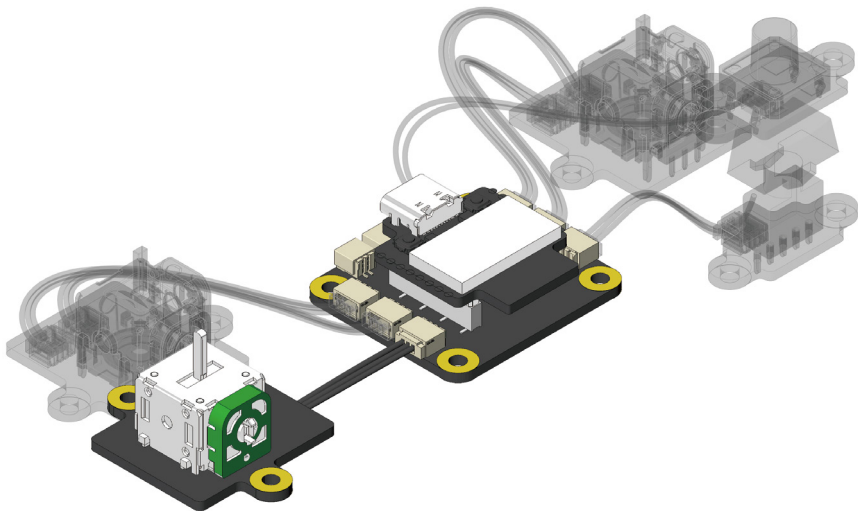
Flip the **Remote Control Transmitter Assembly** as shown in the diagram.

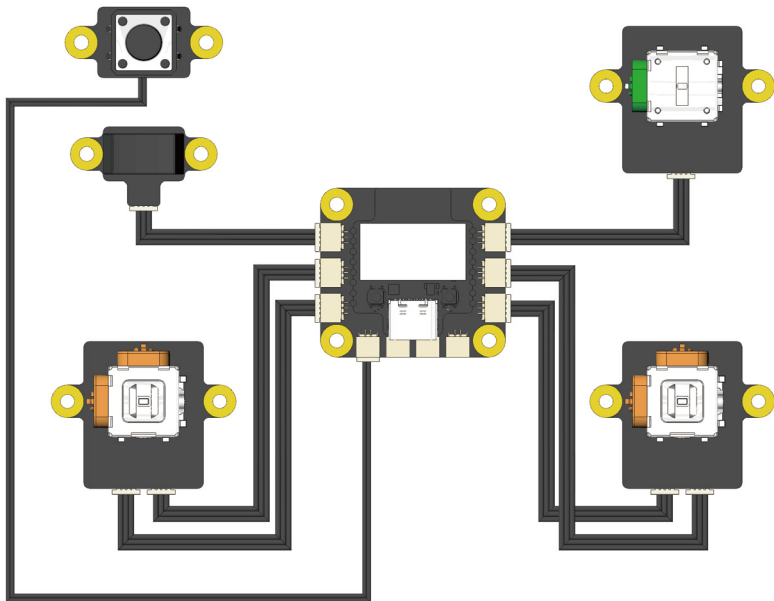


5



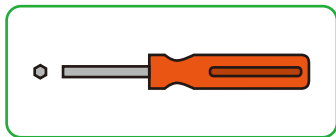
6





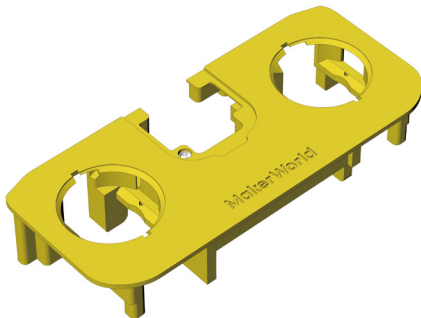
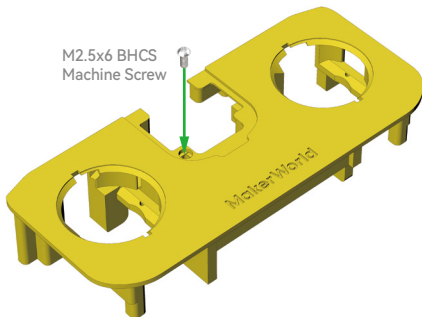
Check the wiring according to the diagram above to ensure it is connected correctly.

7

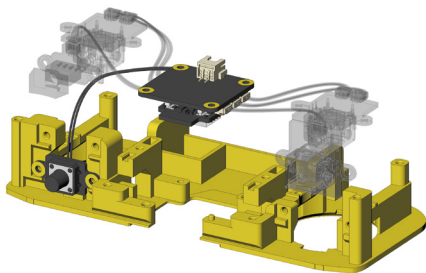
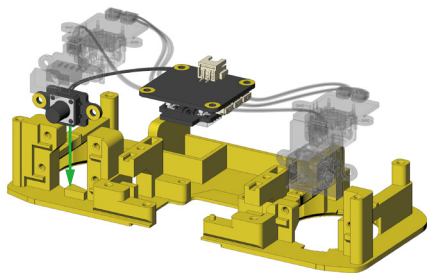


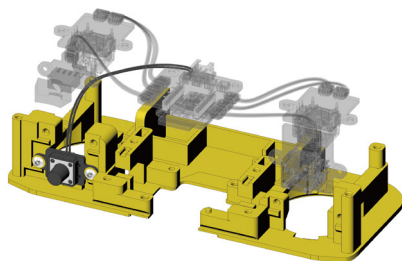
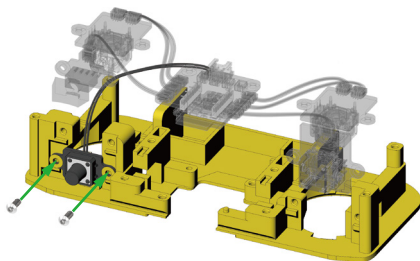
Please use H1.5 Hex Driver

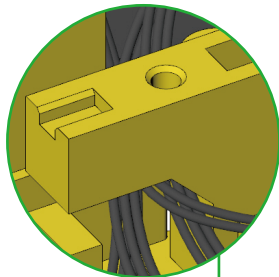
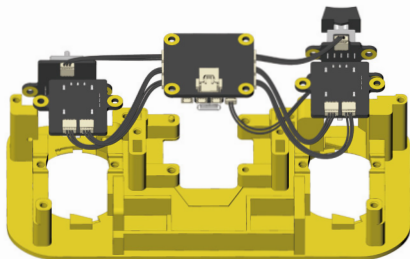
M2.5x6 BHCS  
Machine Screw



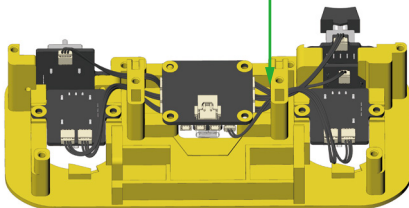
8



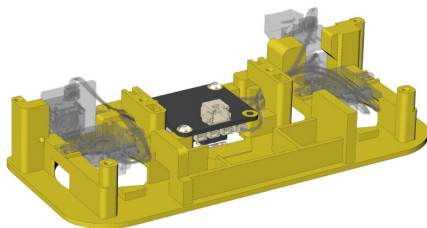
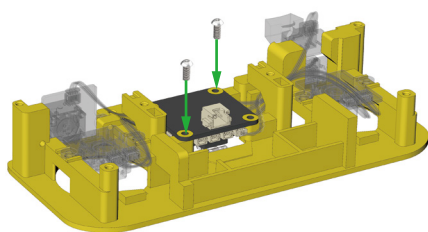




Store the connection cable  
as shown in the diagram.

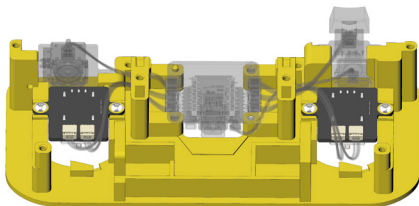
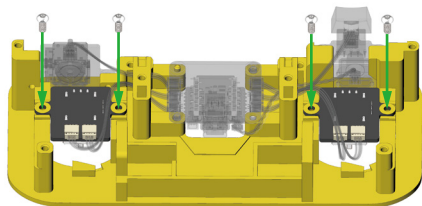


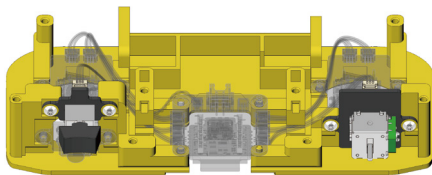
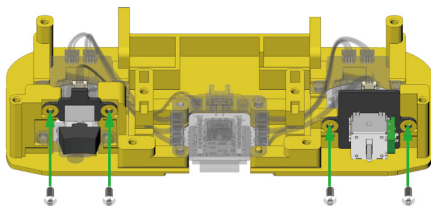
11



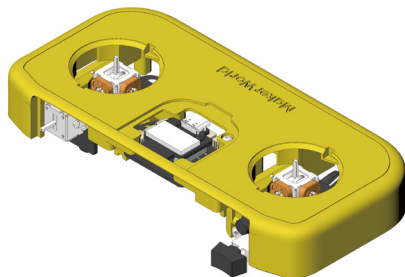
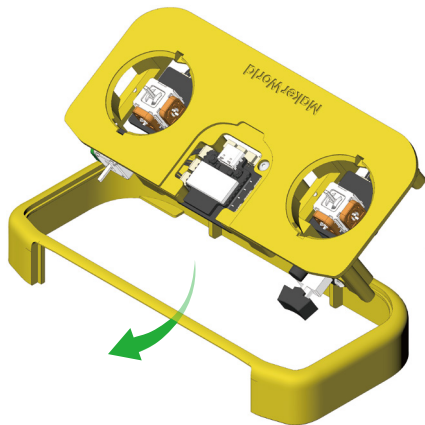


12

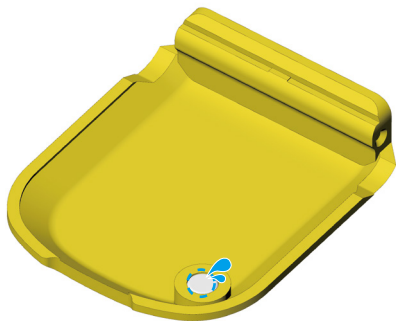
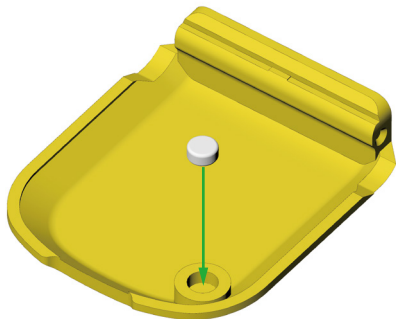




14

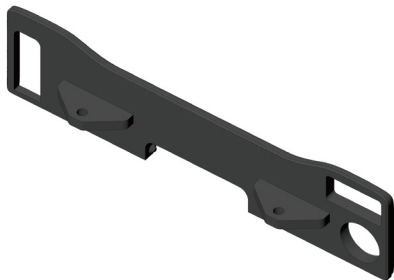
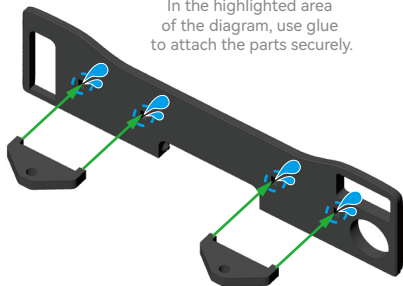


15

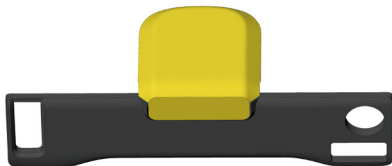
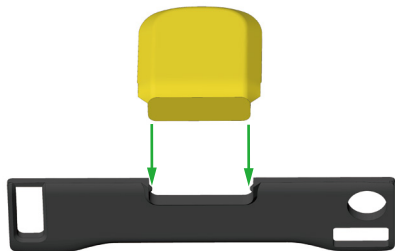


In the highlighted area  
of the diagram, use glue  
to attach the parts securely.

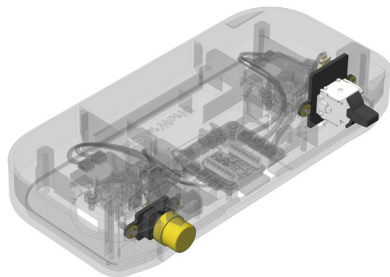
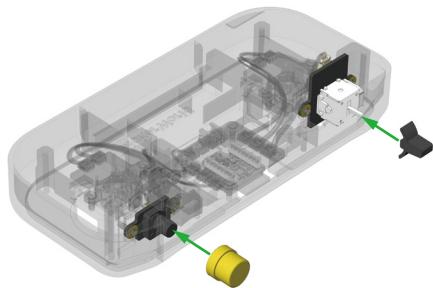
In the highlighted area  
of the diagram, use glue  
to attach the parts securely.

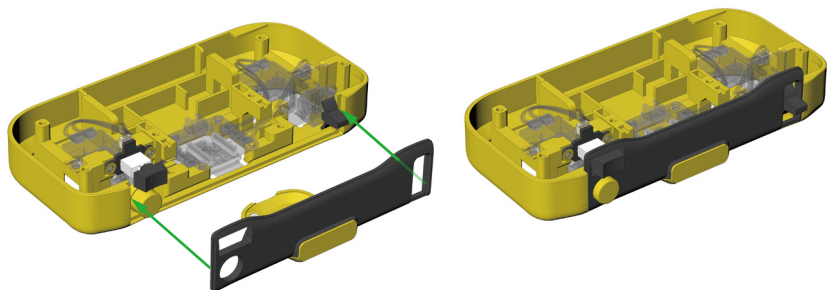


17

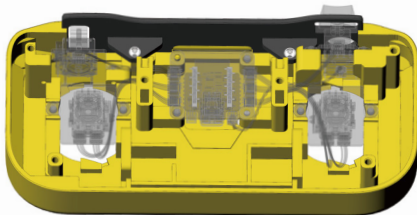
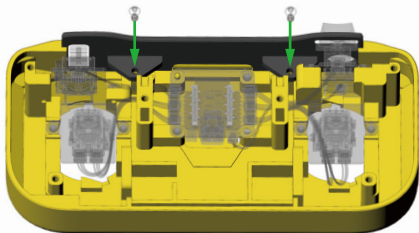


18

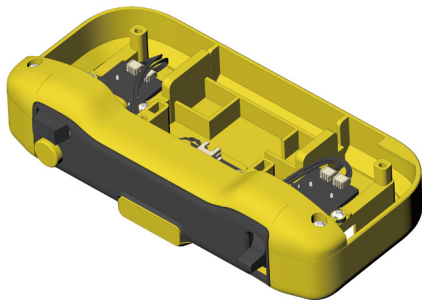
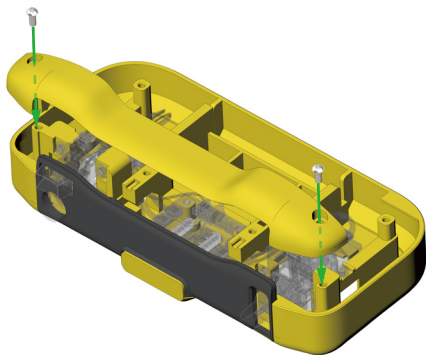


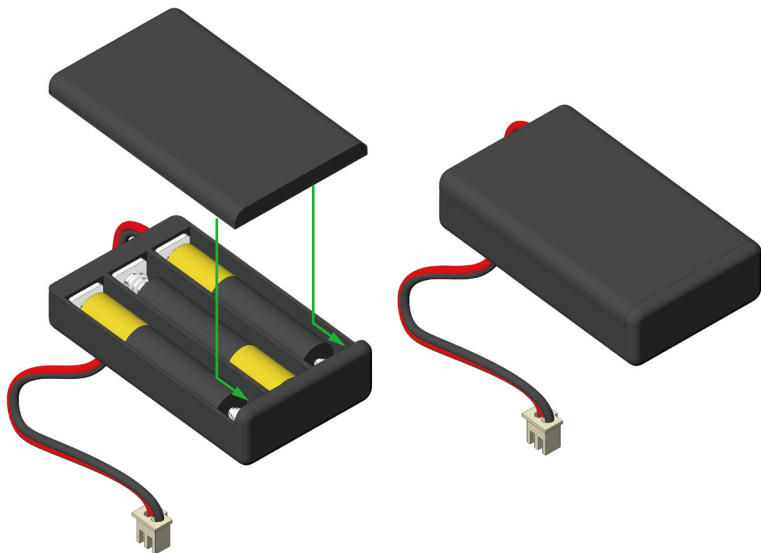


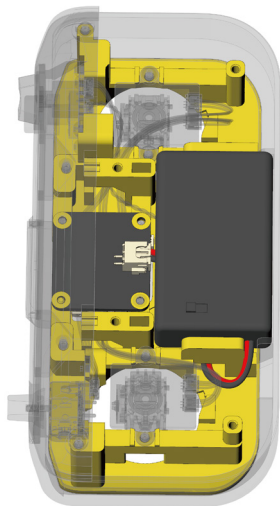
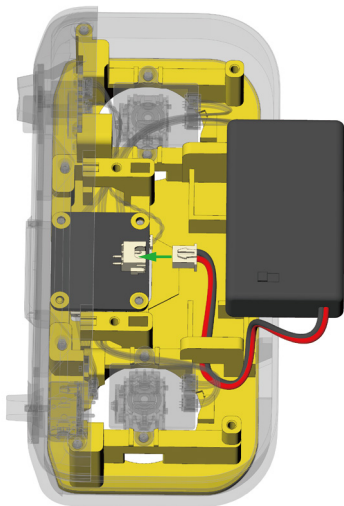




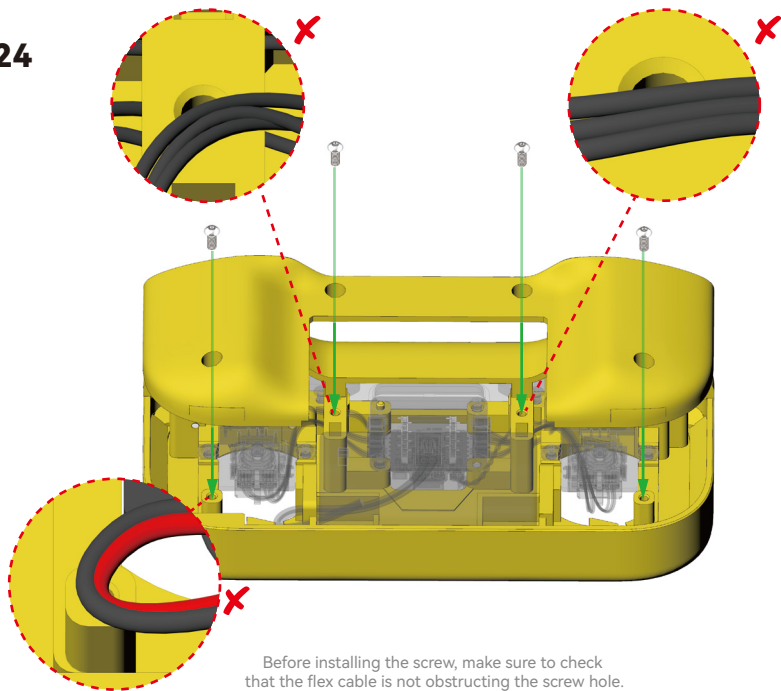
21





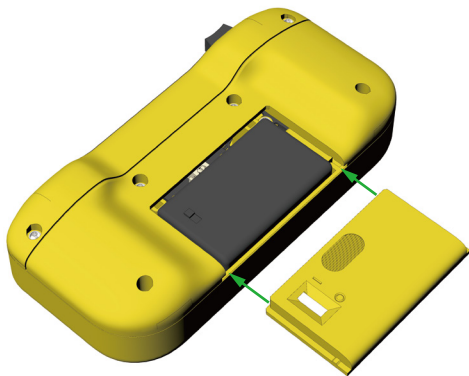


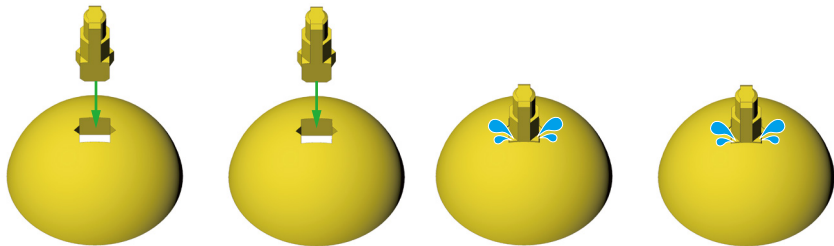
24



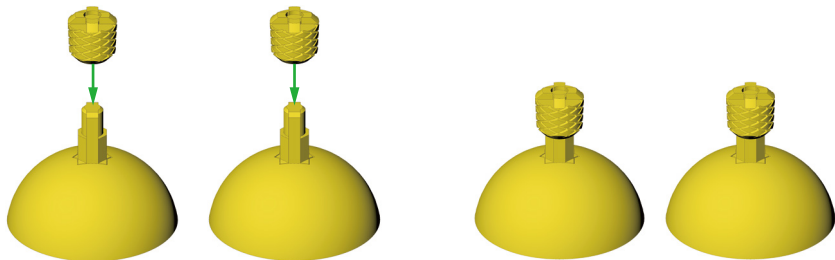
Before installing the screw, make sure to check that the flex cable is not obstructing the screw hole.

25



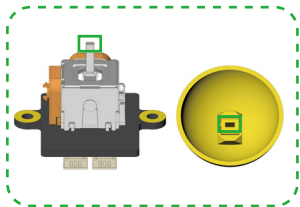


In the highlighted area  
of the diagram, use glue  
to attach the parts securely.



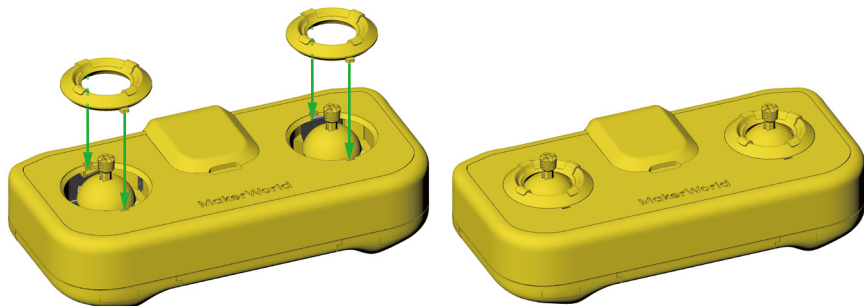


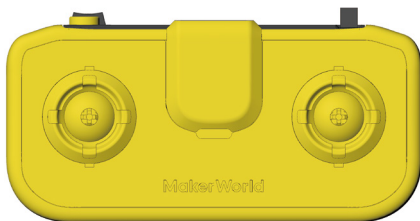
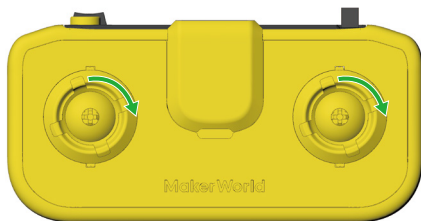
28

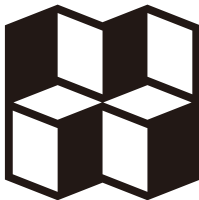


The opening on the printed part is **rectangular**. Please ensure the correct orientation before installation.









**MakerWorld**

<https://makerworld.com/zh>  
<https://makerworld.com/en>